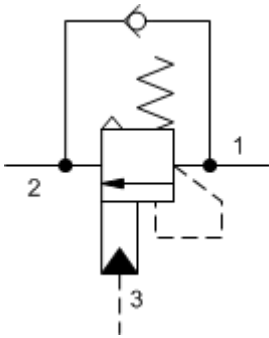
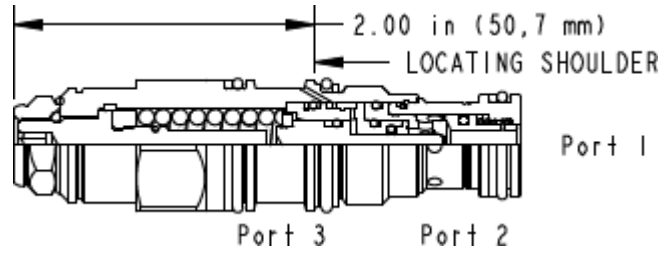


3-Port Atmospherically Referenced



3-Port Atmospherically Referenced, Non-adjustable



**TECHNICAL DATA** NOTE: DATA MAY VARY BY CONFIGURATION. SEE CONFIGURATION SECTION.

cavidad	T-11A
Series	1
Capacity	30 L/min.
Pilot Ratio	4,5:1
Maximum Recommended Load Pressure at Maximum Setting	215 bar
Maximum Setting	280 bar
Adjustment - No. of CCW Turns from Min. to Max. Setting	3
Check Cracking Pressure	1,7 bar
Factory Pressure Settings Established at	30 cc/min.
Maximum Valve Leakage at Reseat	0,3 cc/min.
Reseat	>85% of setting
Valve Hex Size	22,2 mm
Valve Installation Torque	41 - 47 Nm
Adjustment Screw Internal Hex Size	4 mm
Locknut Hex Size	15 mm
Locknut Torque	9 - 10 Nm
Model Weight	0.16 kg.
Seal kit - Cartridge	Buna: 990-011-007
Seal kit - Cartridge	Polyurethane: 990-011-002
Seal kit - Cartridge	Viton: 990-011-006
Seal kit - Cartridge	Buna: 990-011-007
Seal kit - Cartridge	Polyurethane: 990-011-002
Seal kit - Cartridge	Viton: 990-011-006

# OPTION SELECTION EXAMPLE: CABGLHN

**CONTROL**

(L)

**FUNCTIONAL SETTING RANGE**

(H)

**SEAL MATERIAL**

(N)

**MATERIAL/COATING**

**L** Standard Screw Adjustment

**H** 1000 - 4000 psi w/25 psi Check  
(70 - 280 bar w/ 1,7 bar Check),  
3000 psi (210 bar) Standard  
Setting

**N** Buna-N

V Viton

Standard Material/Coating

/AP Stainless Steel, Passivated

/LH Mild Steel, Zinc-Nickel

## PERFORMANCE CURVES

