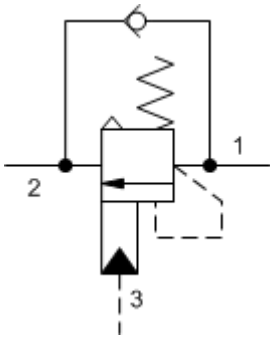
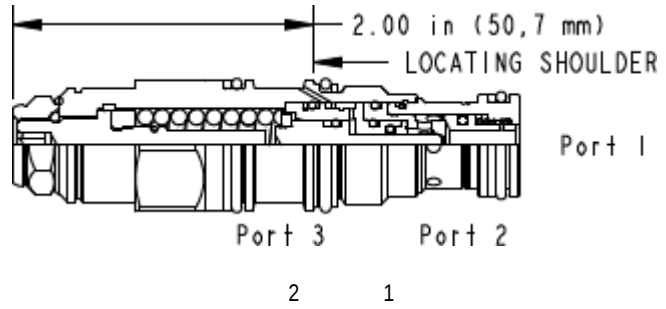


3-Port Atmospherically Referenced



3-Port Atmospherically Referenced, Non-adjustable



**TECHNICAL DATA** NOTE: DATA MAY VARY BY CONFIGURATION. SEE CONFIGURATION SECTION.

	T-11A
	1
	30 L/min.
	4.5:1
	215 bar
	280 bar
	1,7 bar
	0,3 cc/min.
	30 cc/min.
	3
	>85% of setting
	22,2 mm
	41 - 47 Nm
	4 mm
	15 mm
	9 - 10 Nm
	0.16 kg.
Seal kit - Cartridge	Buna: 990-011-007
Seal kit - Cartridge	Polyurethane: 990-011-002
Seal kit - Cartridge	Viton: 990-011-006
Seal kit - Cartridge	Buna: 990-011-007
Seal kit - Cartridge	Polyurethane: 990-011-002
Seal kit - Cartridge	Viton: 990-011-006

# OPTION SELECTION EXAMPLE: CABGLHN

	(L)	(H)	(N)	MATERIAL/COATING
<b>L</b>	<b>H</b>	<b>H</b>	<b>N</b>	Standard Material/Coating
		1000 - 4000 psi 25 psi (70 - 210 bar 1.7 bar), 3000 psi (210 bar)	V	/AP /LH

## TECHNICAL FEATURES

- 1.3
- 200psi 14bar
- 2 1 CAC\* CWC\* 1 2 CABG
- 3
- 4000 1 0.07cc
- 85%
- Sun
- Sun

## PERFORMANCE CURVES

