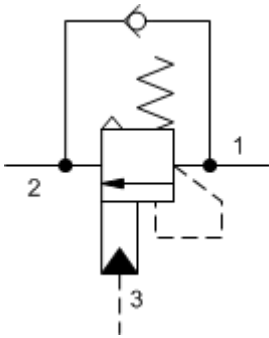
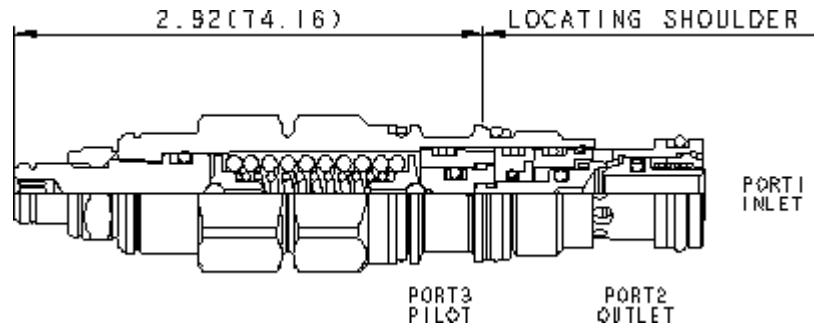


3-Port Atmospherically Referenced



3-Port Atmospherically Referenced, Non-adjustable



TECHNICAL DATA NOTE: DATA MAY VARY BY CONFIGURATION. SEE CONFIGURATION SECTION.

Pilot Ratio	3:1
Maximum Recommended Load Pressure at Maximum Setting	215 bar
Maximum Setting	280 bar
Adjustment - No. of CCW Turns from Min. to Max. Setting	5
Check Cracking Pressure	2,8 bar
Factory Pressure Settings Established at	30 cc/min.
Maximum Valve Leakage at Reseat	0,3 cc/min.
Reseat	>85% of setting
Locknut Hex Size	15 mm
Locknut Torque	9 - 10 Nm
Seal kit - Cartridge	Buna: 990-211-007
Seal kit - Cartridge	Viton: 990-211-006
Seal kit - Cartridge	Buna: 990-211-007
Seal kit - Cartridge	Viton: 990-211-006

CONFIGURATION OPTIONS

Model Code Example: CACALHN

CONTROL

(L)

FUNCTIONAL SETTING RANGE

(H)

SEAL MATERIAL

(N)

MATERIAL/COATING

L Standard Screw Adjustment

H 1000 - 4000 psi (70 - 280 bar),
3000 psi (210 bar) Standard Setting

N Buna-N

Standard Material/Coating

C Tamper Resistant - Factory Set

I 400 - 1500 psi (28 - 105 bar), 1000 psi (70 bar) Standard Setting

V Viton

/AP Stainless Steel, Passivated

/LH Mild Steel, Zinc-Nickel