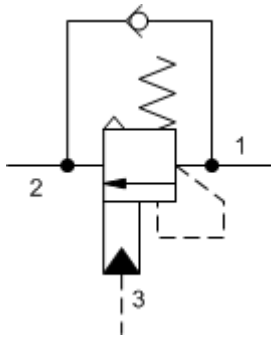
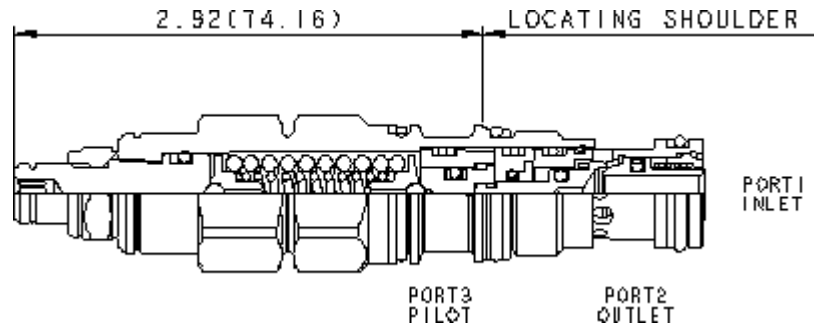


3-Port Atmospherically Referenced



3-Port Atmospherically Referenced, Non-adjustable



TECHNICAL DATA NOTE: DATA MAY VARY BY CONFIGURATION. SEE CONFIGURATION SECTION.

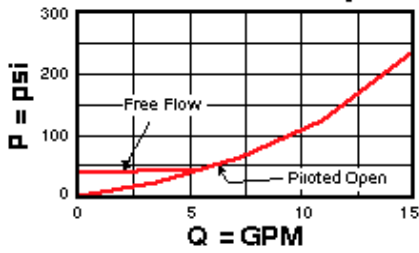
| | |
|---|--------------------|
| cavidad | T-11A |
| Series | 1 |
| Series | |
| Capacity | 60 L/min. |
| Pilot Ratio | 3:1 |
| Maximum Recommended Load Pressure at Maximum Setting | 215 bar |
| Maximum Setting | 280 bar |
| Adjustment - No. of CCW Turns from Min. to Max. Setting | 5 |
| Check Cracking Pressure | 2,8 bar |
| Factory Pressure Settings Established at | 30 cc/min. |
| Maximum Valve Leakage at Reseat | 0,3 cc/min. |
| Operating Characteristic | estándar |
| Reseat | >85% of setting |
| Valve Hex Size | 22,2 mm |
| Valve Installation Torque | 41 - 47 Nm |
| Adjustment Screw Internal Hex Size | 4 mm |
| Locknut Hex Size | 15 mm |
| Locknut Torque | 9 - 10 Nm |
| Model Weight | 0.20 kg. |
| Seal kit - Cartridge | Buna: 990-211-007 |
| Seal kit - Cartridge | Viton: 990-211-006 |
| Seal kit - Cartridge | Buna: 990-211-007 |
| Seal kit - Cartridge | Viton: 990-211-006 |

OPTION SELECTION EXAMPLE: CACALHN

| CONTROL | (L) FUNCTIONAL SETTING RANGE | (H) SEAL MATERIAL | (N) MATERIAL/COATING |
|---|---|-------------------------|---|
| L Standard Screw Adjustment C Tamper Resistant - Factory Set | H 1000 - 4000 psi (70 - 280 bar), 3000 psi (210 bar) Standard Setting I 400 - 1500 psi (28 - 105 bar), 1000 psi (70 bar) Standard Setting | N Buna-N V Viton | Standard Material/Coating /AP Stainless Steel, Passivated /LH Mild Steel, Zinc-Nickel |

PERFORMANCE CURVES

Free Flow and Piloted Open Pressure Drop



Free Flow and Piloted Open Pressure Drop

