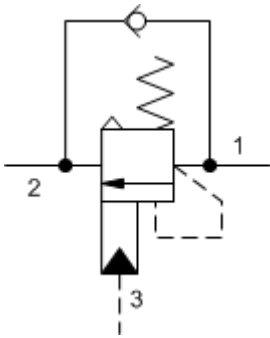
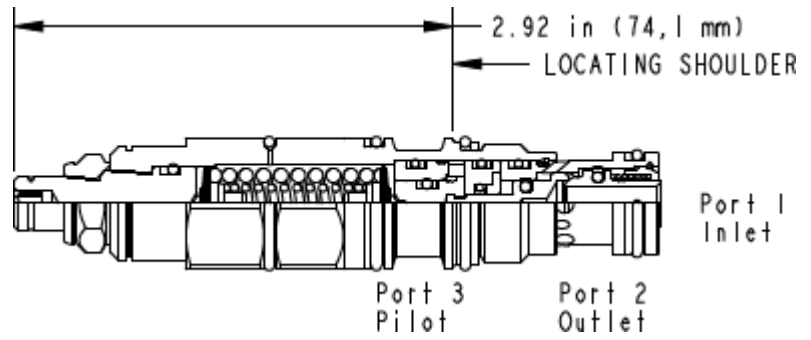


3-Port Atmospherically Referenced



3-Port Atmospherically Referenced, Non-adjustable



2 1 1 2 3

TECHNICAL DATA NOTE: DATA MAY VARY BY CONFIGURATION. SEE CONFIGURATION SECTION.

| | |
|----------------------|--------------------|
| | 5:1 |
| | 320 bar |
| | 420 bar |
| | 2,8 bar |
| | 0,3 cc/min. |
| | 30 cc/min. |
| | 5 |
| | >85% of setting |
| | 15 mm |
| | 9 - 10 Nm |
| Seal kit - Cartridge | Buna: 990-211-007 |
| Seal kit - Cartridge | EPDM: 990-011-014 |
| Seal kit - Cartridge | Viton: 990-211-006 |
| Seal kit - Cartridge | Buna: 990-211-007 |
| Seal kit - Cartridge | EPDM: 990-011-014 |
| Seal kit - Cartridge | Viton: 990-211-006 |

CONFIGURATION OPTIONS

Model Code Example: CACGLGN

| (L) | (G) | (N) | MATERIAL/COATING |
|----------|---|---------------|---------------------------|
| L | G 2000 - 6000 psi (140 - 420 bar), 4000 psi (280 bar) | N | Standard Material/Coating |
| | F 1000 - 2500 psi (70 - 175 bar), 2000 psi (140 bar) | E EPDM | /AP |
| | | v | /LH |