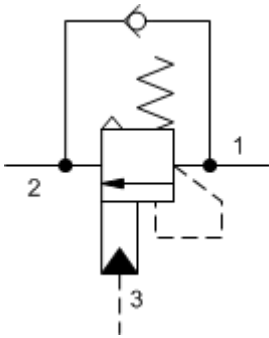
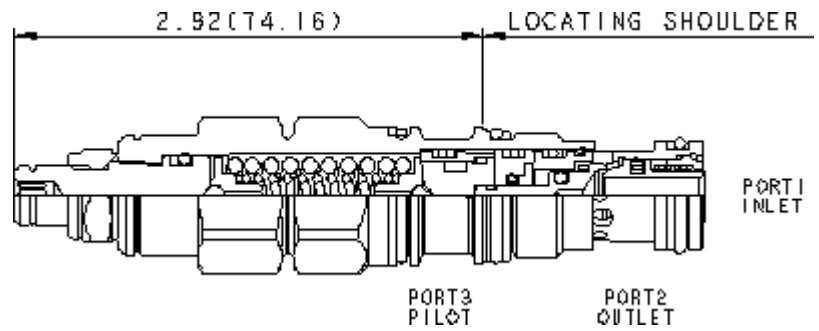


3-Port Atmospherically Referenced



3-Port Atmospherically Referenced, Non-adjustable



TECHNICAL DATA NOTE: DATA MAY VARY BY CONFIGURATION. SEE CONFIGURATION SECTION.

cavidad	T-11A
Series	1
Capacity	60 L/min.
Pilot Ratio	10:1
Maximum Recommended Load Pressure at Maximum Setting	320 bar
Maximum Setting	420 bar
Adjustment - No. of CCW Turns from Min. to Max. Setting	5
Check Cracking Pressure	2,8 bar
Factory Pressure Settings Established at	30 cc/min.
Maximum Valve Leakage at Reseat	0,3 cc/min.
Operating Characteristic	estándar
Pilot Configuration	Sealed
Reseat	>85% of setting
Valve Hex Size	22,2 mm
Valve Installation Torque	41 - 47 Nm
Adjustment Screw Internal Hex Size	4 mm
Locknut Hex Size	15 mm
Locknut Torque	9 - 10 Nm
Model Weight	0.20 kg.
Seal kit - Cartridge	Buna: 990-211-007
Seal kit - Cartridge	Viton: 990-211-006
Seal kit - Cartridge	Buna: 990-211-007
Seal kit - Cartridge	Viton: 990-211-006

OPTION SELECTION EXAMPLE: CACHLGN

CONTROL

(L)

FUNCTIONAL SETTING RANGE

(G)

SEAL MATERIAL

(N)

MATERIAL/COATING

- L** Standard Screw Adjustment
- C** Tamper Resistant - Factory Set

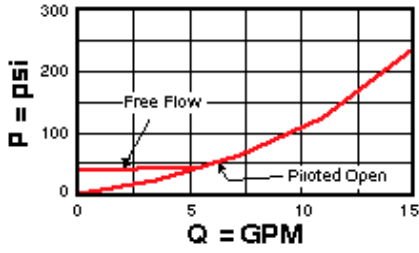
- G** 2000 - 6000 psi (140 - 420 bar),
4000 psi (280 bar) Standard Setting

- N** Buna-N
- V** Viton

- Standard Material/Coating
- /AP** Stainless Steel, Passivated
- /LH** Mild Steel, Zinc-Nickel

PERFORMANCE CURVES

Free Flow and Piloted Open Pressure Drop



Free Flow and Piloted Open Pressure Drop

