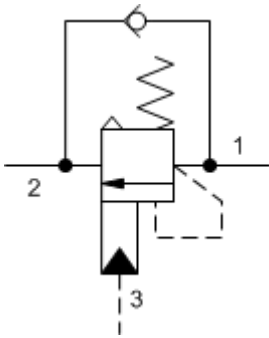
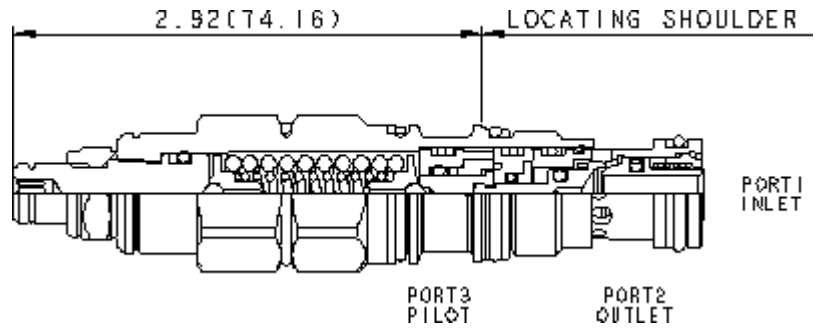


3-Port Atmospherically Referenced



3-Port Atmospherically Referenced, Non-adjustable



TECHNICAL DATA

	2:1
	320 bar
	420 bar
	2,8 bar
	0,3 cc/min.
	30 cc/min.
-	5
	>85% of setting
	15 mm
	9 - 10 Nm
Seal kit - Cartridge	Buna: 990-211-007
Seal kit - Cartridge	Viton: 990-211-006
Seal kit - Cartridge	Buna: 990-211-007
Seal kit - Cartridge	Viton: 990-211-006

CONFIGURATION

L	
G	2000 - 6000 psi (140 - 420 bar), 4000 psi (280 bar)
N	
	Material/Coating

CONFIGURATION OPTIONS

Model Code Example: CACLLGN

(L)	(G)	(N)	MATERIAL/COATING
L	G 2000 - 6000 psi (140 - 420 bar), 4000 psi (280 bar)	N	Standard Material/Coating
	F 1000 - 2500 psi (70 - 175 bar), 2000 psi (140 bar)	V	/LH -