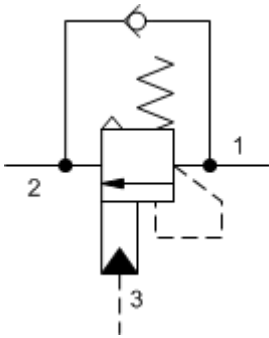
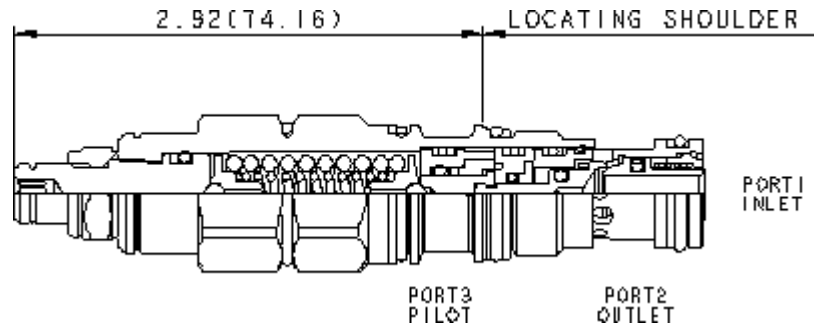


3-Port Atmospherically Referenced



3-Port Atmospherically Referenced, Non-adjustable



**TECHNICAL DATA** NOTE: DATA MAY VARY BY CONFIGURATION. SEE CONFIGURATION SECTION.

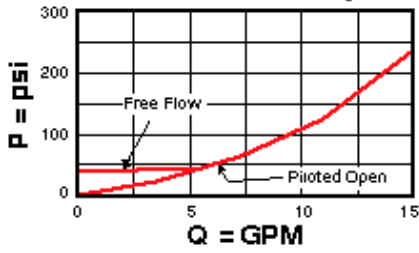
cavidad	T-11A
Series	1
Capacity	60 L/min.
Pilot Ratio	2:1
Maximum Recommended Load Pressure at Maximum Setting	320 bar
Maximum Setting	420 bar
Adjustment - No. of CCW Turns from Min. to Max. Setting	5
Check Cracking Pressure	2,8 bar
Factory Pressure Settings Established at	30 cc/min.
Maximum Valve Leakage at Reseat	0,3 cc/min.
Operating Characteristic	estándar
Reseat	>85% of setting
Valve Hex Size	22,2 mm
Valve Installation Torque	41 - 47 Nm
Adjustment Screw Internal Hex Size	4 mm
Locknut Hex Size	15 mm
Locknut Torque	9 - 10 Nm
Model Weight	0.20 kg.
Seal kit - Cartridge	Buna: 990-211-007
Seal kit - Cartridge	Viton: 990-211-006
Seal kit - Cartridge	Buna: 990-211-007
Seal kit - Cartridge	Viton: 990-211-006

## OPTION SELECTION EXAMPLE: CACLLGN

CONTROL	(L) FUNCTIONAL SETTING RANGE	(G) SEAL MATERIAL	(N) MATERIAL/COATING
<b>L</b> Standard Screw Adjustment <b>C</b> Tamper Resistant - Factory Set	<b>G</b> 2000 - 6000 psi (140 - 420 bar), 4000 psi (280 bar) Standard Setting  <b>F</b> 1000 - 2500 psi (70 - 175 bar), 2000 psi (140 bar) Standard Setting	<b>N</b> Buna-N <b>V</b> Viton	Standard Material/Coating <b>/LH</b> Mild Steel, Zinc-Nickel

### PERFORMANCE CURVES

**Free Flow and Piloted Open Pressure Drop**



**Free Flow and Piloted Open Pressure Drop**

