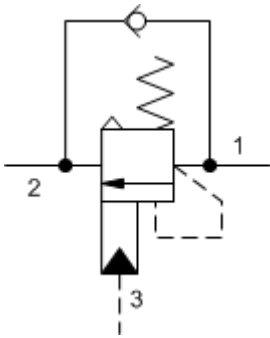
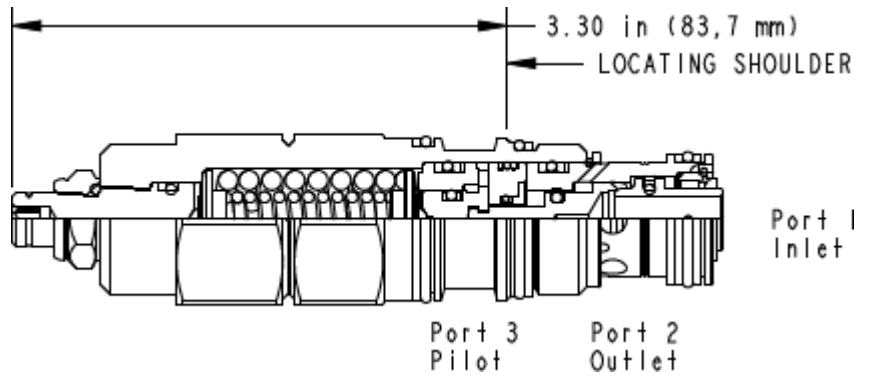


3-Port Atmosphericly Referenced



3-Port Atmosphericly Referenced, Non-adjustable



2 1 1 2 3

**TECHNICAL DATA** NOTE: DATA MAY VARY BY CONFIGURATION. SEE CONFIGURATION SECTION.

	T-2A
	2
	120 L/min.
	3:1
	215 bar
	280 bar
	1,7 bar
	0,3 cc/min.
	30 cc/min.
	-
	5
	>85% of setting
	28,6 mm
	61 - 68 Nm
	4 mm
	15 mm
	9 - 10 Nm
	0.38 kg.
Seal kit - Cartridge	Buna: 990-302-007
Seal kit - Cartridge	Viton: 990-302-006
Seal kit - Cartridge	Buna: 990-302-007
Seal kit - Cartridge	Viton: 990-302-006

# OPTION SELECTION EXAMPLE: CAEALHN

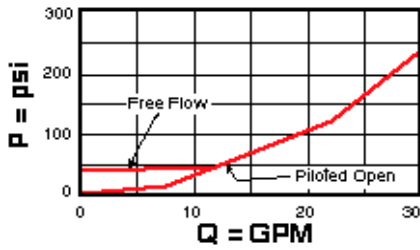
	(L)	(H)	(N)	MATERIAL/COATING
<b>L</b>		<b>H</b> 1000 - 4000 psi (70 - 280 bar), 3000 psi (210 bar)	<b>N</b>	Standard Material/Coating
<b>C</b> -		<b>I</b> 400 - 1500 psi (28 - 105 bar), 1000 psi (70 bar)	<b>V</b>	/AP /LH -

## TECHNICAL FEATURES

- 1.3
- 
- 200psi 14bar
- 4000 1 0.07cc
- 85%
- Sun
- 
- 
- 3
- 3
- "/AP"
- Sun

## PERFORMANCE CURVES

**Free Flow and Piloted Open Pressure Drop**



**Free Flow and Piloted Open Pressure Drop**

