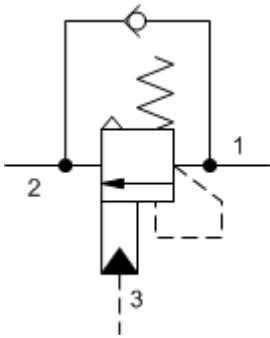
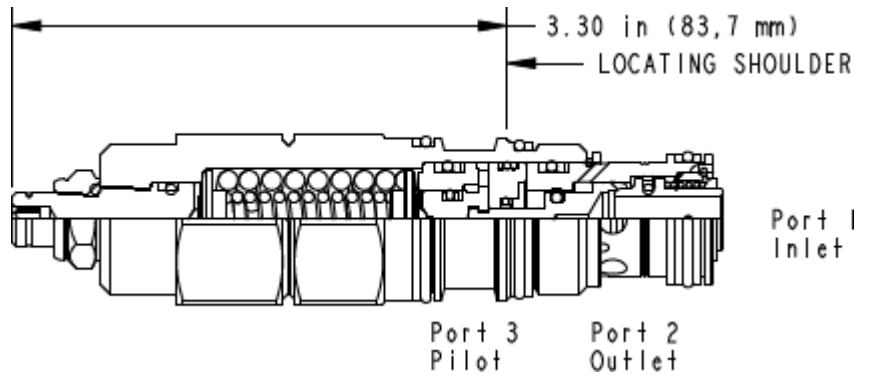


3-Port Atmospherically Referenced



3-Port Atmospherically Referenced, Non-adjustable



**TECHNICAL DATA** NOTE: DATA MAY VARY BY CONFIGURATION. SEE CONFIGURATION SECTION.

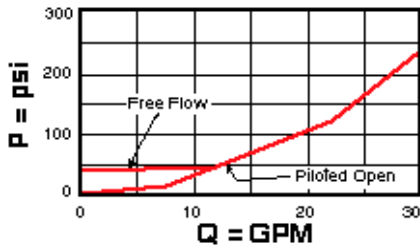
|   |                    |
|---|--------------------|
| cavidad   | T-2A               |
| Series  | 2                  |
| Capacity  | 120 L/min.         |
| Pilot Ratio   | 5:1                |
| Maximum Recommended Load Pressure at Maximum Setting    | 320 bar            |
| Maximum Setting   | 420 bar            |
| Adjustment - No. of CCW Turns from Min. to Max. Setting | 5                  |
| Check Cracking Pressure                                 | 1,7 bar            |
| Factory Pressure Settings Established at                | 30 cc/min.         |
| Maximum Valve Leakage at Reseat                         | 0,3 cc/min.        |
| Operating Characteristic                                | estándar           |
| Reseat  | >85% of setting    |
| Valve Hex Size  | 28,6 mm            |
| Valve Installation Torque                               | 61 - 68 Nm         |
| Adjustment Screw Internal Hex Size                      | 4 mm               |
| Locknut Hex Size  | 15 mm              |
| Locknut Torque  | 9 - 10 Nm          |
| Model Weight  | 0.38 kg.           |
| Seal kit - Cartridge                                    | Buna: 990-302-007  |
| Seal kit - Cartridge                                    | Viton: 990-302-006 |
| Seal kit - Cartridge                                    | Buna: 990-302-007  |
| Seal kit - Cartridge                                    | Viton: 990-302-006 |

# OPTION SELECTION EXAMPLE: CAEGLGN

| CONTROL   | (L) FUNCTIONAL SETTING RANGE  | (G) SEAL MATERIAL                 | (N) MATERIAL/COATING                                     |
|---|---|-----------------------------------|--|
| <b>L</b> Standard Screw Adjustment<br><b>C</b> Tamper Resistant - Factory Set | <b>G</b> 2000 - 6000 psi (140 - 420 bar),<br>4000 psi (280 bar) Standard Setting<br><br><b>F</b> 1000 - 2500 psi (70 - 175 bar),<br>2000 psi (140 bar) Standard Setting | <b>N</b> Buna-N<br><b>V</b> Viton | Standard Material/Coating<br>/LH Mild Steel, Zinc-Nickel |

## PERFORMANCE CURVES

**Free Flow and Piloted Open Pressure Drop**



**Free Flow and Piloted Open Pressure Drop**

