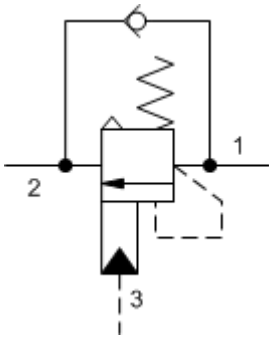
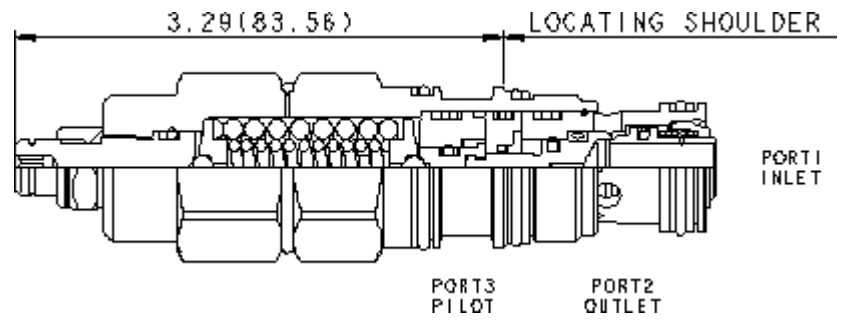


3-Port Atmospherically Referenced



3-Port Atmospherically Referenced, Non-adjustable



TECHNICAL DATA NOTE: DATA MAY VARY BY CONFIGURATION. SEE CONFIGURATION SECTION.

Pilot Ratio	1:1
Maximum Recommended Load Pressure at Maximum Setting	215 bar
Maximum Setting	280 bar
Adjustment - No. of CCW Turns from Min. to Max. Setting	5
Check Cracking Pressure	1,7 bar
Factory Pressure Settings Established at	30 cc/min.
Maximum Valve Leakage at Reseat	0,3 cc/min.
Reseat	>85% of setting
Locknut Hex Size	15 mm
Locknut Torque	9 - 10 Nm
Seal kit - Cartridge	Buna: 990-302-007
Seal kit - Cartridge	Viton: 990-302-006
Seal kit - Cartridge	Buna: 990-302-007
Seal kit - Cartridge	Viton: 990-302-006

CONFIGURATION OPTIONS

Model Code Example: CAEKLHN

CONTROL

(L)

FUNCTIONAL SETTING RANGE

(H)

SEAL MATERIAL

(N)

L Standard Screw Adjustment

C Tamper Resistant - Factory Set

H 1000 - 4000 psi (70 - 280 bar), 3000 psi (210 bar)
Standard Setting

I 400 - 1500 psi (28 - 105 bar), 1000 psi (70 bar)
Standard Setting

N Buna-N

V Viton