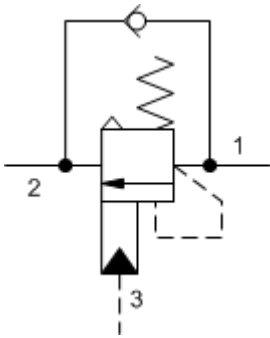
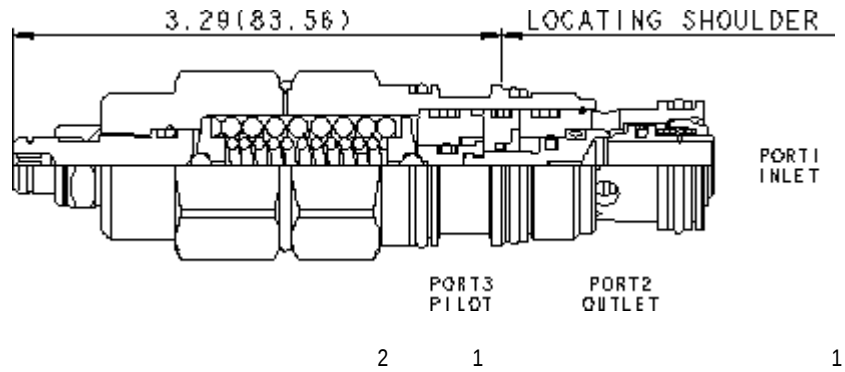


3-Port Atmospherically Referenced



3-Port Atmospherically Referenced, Non-adjustable



TECHNICAL DATA NOTE: DATA MAY VARY BY CONFIGURATION. SEE CONFIGURATION SECTION.

	T-2A
	2
	120 L/min.
	1:1
	215 bar
	280 bar
	1,7 bar
	0,3 cc/min.
	30 cc/min.
	5
	>85% of setting
	28,6 mm
	61 - 68 Nm
	4 mm
	15 mm
	9 - 10 Nm
	0.38 kg.
Seal kit - Cartridge	Buna: 990-302-007
Seal kit - Cartridge	Viton: 990-302-006
Seal kit - Cartridge	Buna: 990-302-007
Seal kit - Cartridge	Viton: 990-302-006

OPTION SELECTION EXAMPLE: CAEKLHN

(L)

(H)

(N)

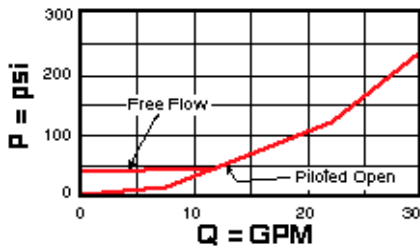
L	H 1000 - 4000 psi (70 - 280 bar), 3000 psi (210 bar)	N
	I 400 - 1500 psi (28 - 105 bar), 1000 psi (70 bar)	V

TECHNICAL FEATURES

- 1.3
-
- 200psi 14bar
- 4000 1 0.07cc
- 85%
- Sun
-
-
- 3
- 3
- Sun

PERFORMANCE CURVES

Free Flow and Piloted Open Pressure Drop



Free Flow and Piloted Open Pressure Drop

