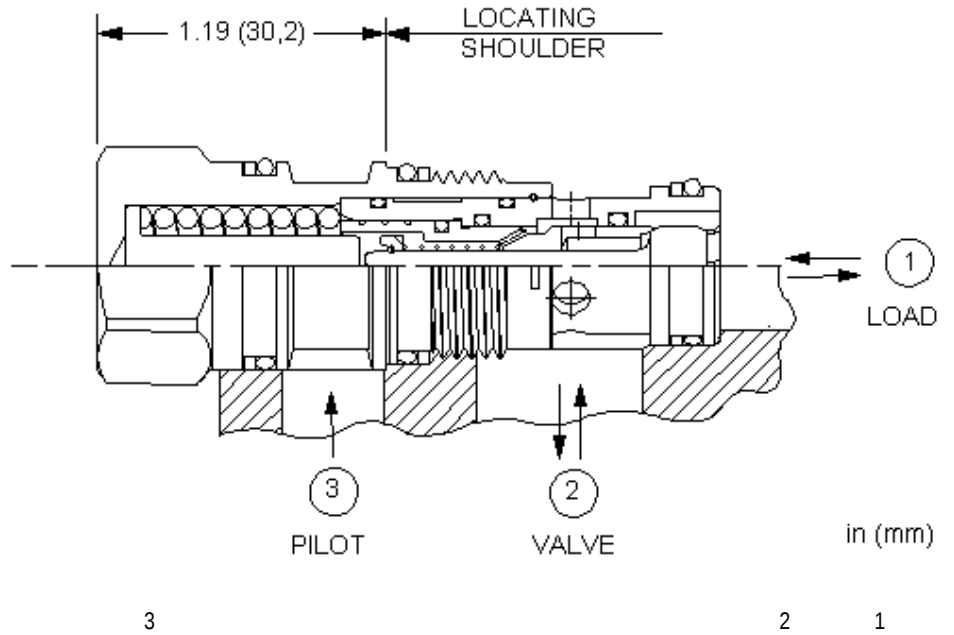


3-Port Non-vented, Fixed Setting



CONFIGURATION

N	2900 - 3500 psi (200 - 245 bar)
N	
	Material/Coating

TECHNICAL DATA

NOTE: DATA MAY VARY BY CONFIGURATION. SEE CONFIGURATION SECTION.

	T-11A
	1
	40 L/min.
	1.5:1
	See Technical Features
	1,7 bar
	0,3 cc/min.
	30 cc/min.
	22,2 mm
	41 - 47 Nm
	0.12 kg.
Seal kit - Cartridge	Buna: 990-011-007
Seal kit - Cartridge	Polyurethane: 990-011-002
Seal kit - Cartridge	Viton: 990-011-006

OPTION SELECTION EXAMPLE: CBBBXNN

	(N)	(N) MATERIAL/COATING
N 2900 - 3500 psi (200 - 245 bar)	N	Standard Material/Coating
P 2250 - 2680 psi (155 - 185 bar)	V	/LH -

TECHNICAL FEATURES

- N 2200psi 150bar N 3500psi 245bar
 - P 1700psi 120bar P 1680psi 185bar
 - “ ”
 -
 -
 -
 -
 - 3
 -
 - 2 1+ x
 - Sun
- ±50psi 3.5bar

PERFORMANCE CURVES

