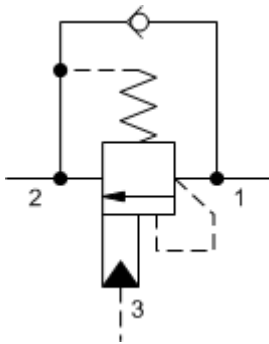
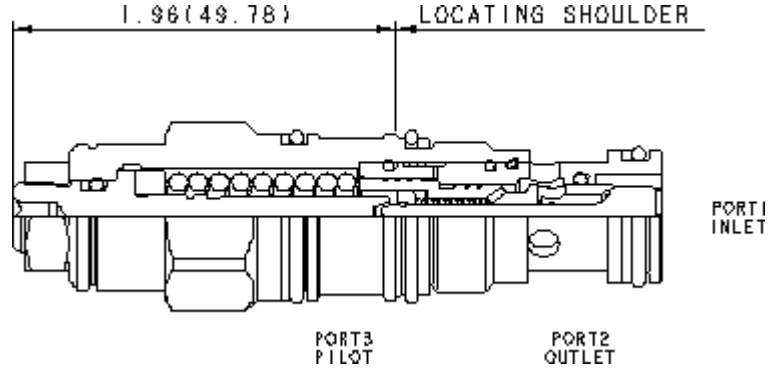


3-Port Non-vented



3-Port Non-vented, Fixed Setting



Counterbalance valves with pilot assist are meant to control an overrunning load. The check valve allows free flow from the directional valve (port 2) to the load (port 1) while a direct-acting, pilot-assisted relief valve controls flow from port 1 to port 2. Pilot assist at port 3 lowers the effective setting of the relief valve at a rate determined by the pilot ratio. Other names for this valve include motion control valve and over-center valve.

TECHNICAL DATA

| | |
|---|---------------------------|
| Pilot Ratio | 2:1 |
| Maximum Recommended Load Pressure at Maximum Setting | 3075 psi |
| Maximum Setting | 4000 psi |
| Adjustment - No. of CCW Turns from Min. to Max. Setting | 3.75 |
| Factory Pressure Settings Established at | 2 in ³ /min. |
| Maximum Valve Leakage at Reseat | 5 drops/min. |
| Reseat | >85% of setting |
| Locknut Hex Size | 9/16 in. |
| Locknut Torque | 80 - 90 lbf in. |
| Seal kit - Cartridge | Buna: 990-011-007 |
| Seal kit - Cartridge | Polyurethane: 990-011-002 |
| Seal kit - Cartridge | Viton: 990-011-006 |

CONFIGURATION

| | |
|-----------------------------------|---|
| L Control | Standard Screw Adjustment |
| I Functional Setting Range | 400 - 1500 psi w/25 psi Check (28 - 105 bar w/ 1,7 bar Check), 1000 psi (70 bar) Standard Setting |
| N Seal Material | Buna-N |
| Material/Coating | |

CONFIGURATION OPTIONS

CONTROL

- L** Standard Screw Adjustment
- C** Tamper Resistant - Factory Set

(L)

Model Code Example: CBCYLIN

FUNCTIONAL SETTING RANGE

(I)

- I** 400 - 1500 psi w/25 psi Check (28 - 105 bar w/ 1,7 bar Check), 1000 psi (70 bar) Standard Setting
- A** 1000 - 4000 psi w/4 psi Check (70 - 280 bar w/ 0,3 bar Check), 3000 psi (210 bar) Standard Setting
- B** 400 - 1500 psi w/4 psi Check (28 - 105 bar w/ 0,3 bar Check), 1000 psi (70 bar) Standard Setting
- H** 1000 - 4000 psi w/25 psi Check (70 - 280 bar w/ 1,7 bar Check), 3000 psi (210 bar) Standard Setting

SEAL MATERIAL

- N** Buna-N
- V** Viton

(N)

MATERIAL/COATING

(/LH)

- /LH** Mild Steel, Zinc-Nickel
- /JAP** Stainless Steel, Passivated Standard Material/Coating