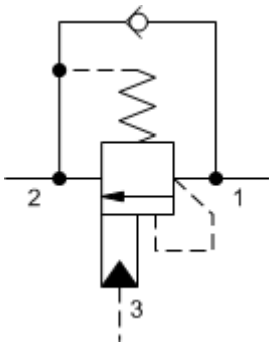


2 1



TECHNICAL DATA

	1:1
	215 bar
	280 bar
	0,3 cc/min.
	30 cc/min.
-	3.75
	>85% of setting
	15 mm
	9 - 10 Nm
Seal kit - Cartridge	Buna: 990-202-007
Seal kit - Cartridge	Polyurethane: 990-002-002
Seal kit - Cartridge	Viton: 990-202-006

CONFIGURATION

L	
J	2000 - 5000 psi 25 psi (140 - 350 bar 1.7 bar), 3000 psi (210 bar)
N	Material/Coating

CONFIGURATION OPTIONS

Model Code Example: **CBEWLJN**

(L)	(J)	(N)	MATERIAL/COATING
L	J 2000 - 5000 psi 25 psi (140 - bar 1.7 bar), 3000 psi (210 b	N	Standard Material/Coating
C -	B 400 - 1500 psi 4 psi (28 - 105 bar 0.3 bar), 1000 psi (70 bar)	V	/LH -
	C 2000 - 5000 psi 4 psi (140 - 350 bar 0.3 bar), 3000 psi (210 bar)		
	D 1000 - 2500 psi 4 psi (70 - 175 bar 0.3 bar), 2000 psi (140 bar)		
	K 1000 - 2500 psi 25 psi (70 - 175 bar 1.7 bar), 2000 psi (140 bar)		