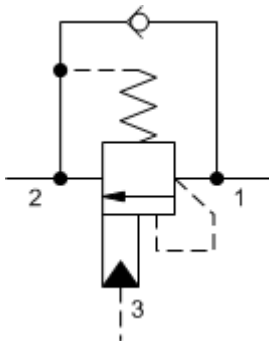
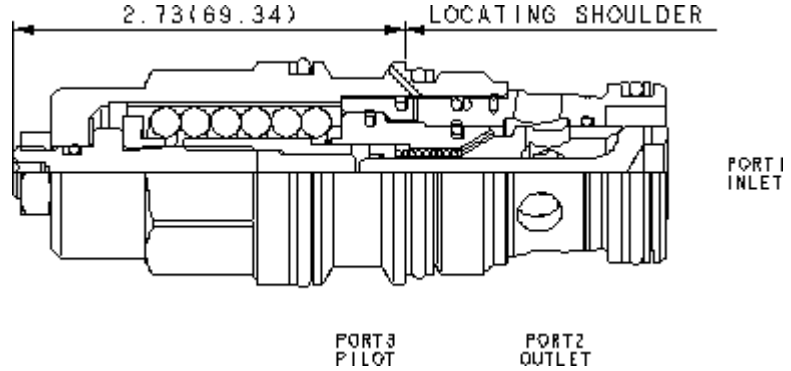


3-Port Non-vented



3-Port Non-vented, Fixed Setting



Counterbalance valves with pilot assist are meant to control an overrunning load. The check valve allows free flow from the directional valve (port 2) to the load (port 1) while a direct-acting, pilot-assisted relief valve controls flow from port 1 to port 2. Pilot assist at port 3 lowers the effective setting of the relief valve at a rate determined by the pilot ratio. Other names for this valve include motion control valve and over-center valve.

TECHNICAL DATA NOTE: DATA MAY VARY BY CONFIGURATION. SEE CONFIGURATION SECTION.

| | |
|---|---------------------------|
| Pilot Ratio | 4.5:1 |
| Maximum Recommended Load Pressure at Maximum Setting | 3850 psi |
| Maximum Setting | 5000 psi |
| Adjustment - No. of CCW Turns from Min. to Max. Setting | 3.75 |
| Factory Pressure Settings Established at | 2 in ³ /min. |
| Maximum Valve Leakage at Reseat | 5 drops/min. |
| Reseat | >85% of setting |
| Locknut Hex Size | 9/16 in. |
| Locknut Torque | 80 - 90 lbf in. |
| Seal kit - Cartridge | Buna: 990-017-007 |
| Seal kit - Cartridge | Polyurethane: 990-017-002 |
| Seal kit - Cartridge | Viton: 990-017-006 |

CONFIGURATION OPTIONS

- CONTROL** (L)
- L** Standard Screw Adjustment
 - C** Tamper Resistant - Factory Set

Model Code Example: CBFDLJN

- FUNCTIONAL SETTING RANGE** (J)
- J** 2000 - 5000 psi w/25 psi Check (140 - 350 bar w/ 1,7 bar Check), 3000 psi (210 bar) Standard Setting
 - C** 2000 - 5000 psi w/4 psi Check (140 - 350 bar w/ 0,3 bar Check), 3000 psi (210 bar) Standard Setting
 - D** 1000 - 2500 psi w/4 psi Check (70 - 175 bar w/ 0,3 bar Check), 2000 psi (140 bar) Standard Setting
 - K** 1000 - 2500 psi w/25 psi Check (70 - 175 bar w/ 1,7 bar Check), 2000 psi (140 bar) Standard Setting

- SEAL MATERIAL** (N)
- N** Buna-N
 - V** Viton

- MATERIAL/COATING**
- Standard Material/Coating**
 - /LH** Mild Steel, Zinc-Nickel