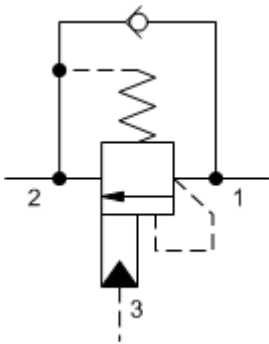


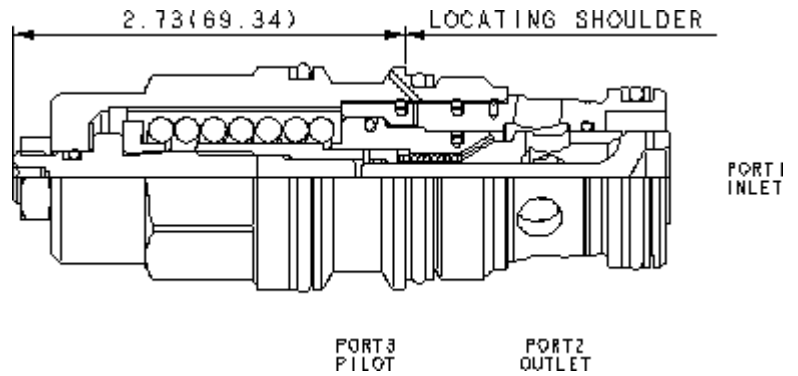
3-Port Non-vented



3-Port Non-vented, Fixed Setting

CONFIGURATION

L	400 - 1500 psi 25 psi (28 - 105 bar)
I	1.7 bar (25 psi), 1000 psi (70 bar)
N	Material/Coating



TECHNICAL DATA

NOTE:

	T-17A	DATA
	3	MAY
	240 L/min.	VARY
	3:1	BY
	215 bar	
	280 bar	
	0,3 cc/min.	
	30 cc/min.	
	3.75	
	>85% of setting	
	31,8 mm	
	203 - 217 Nm	
	4 mm	
	15 mm	
	9 - 10 Nm	
	0.60 kg.	
Seal kit - Cartridge	Buna: 990-017-007	
Seal kit - Cartridge	EPDM: 990-017-014	
Seal kit - Cartridge	Polyurethane: 990-017-002	
Seal kit - Cartridge	Viton: 990-017-006	
Seal kit - Cartridge	Buna: 990-017-007	
Seal kit - Cartridge	EPDM: 990-017-014	
Seal kit - Cartridge	Polyurethane: 990-017-002	
Seal kit - Cartridge	Viton: 990-017-006	

CONFIGURATION. SEE CONFIGURATION SECTION.

OPTION SELECTION EXAMPLE: CBGALIN

	(L)	(I)	(N)	MATERIAL/COATING	(/LH)
L	I	400 - 1500 psi 25 psi (28 - 10 bar 1.7 bar), 1000 psi (70 bar)	N	/LH	-
	A	1000 - 4000 psi 4 psi (70 - 280 bar 0.3 bar), 3000 psi (210 bar)	E	/AP	
	B	400 - 1500 psi 4 psi (28 - 105 bar 0.3 bar), 1000 psi (70 bar)	V		Standard Material/Coating
	H	1000 - 4000 psi 25 psi (70 - 280 bar 1.7 bar), 3000 psi (210 bar)			

TECHNICAL FEATURES

- 1.3
- 200psi 14bar
- 2 1+ x
- 85%
- EPDM
- Sun
- 4psi 0.3bar
- 3
- Sun

PERFORMANCE CURVES

