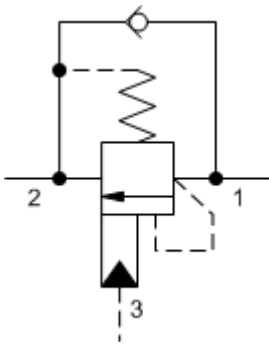
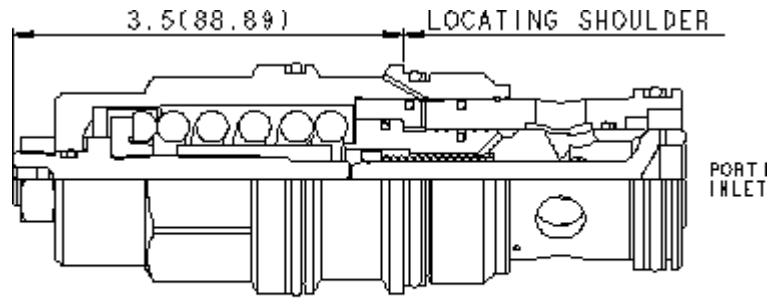


3-Port Non-vented



3-Port Non-vented, Fixed Setting



PORT 3 PILOT PORT 2 OUTLET PORT 1 INLET
2 1 1 2 3

TECHNICAL DATA NOTE: DATA MAY VARY BY CONFIGURATION. SEE CONFIGURATION SECTION.

| | |
|----------------------|---------------------------|
| | 4.5:1 |
| | 270 bar |
| | 350 bar |
| | 0,3 cc/min. |
| | 30 cc/min. |
| | 3.75 |
| | >85% of setting |
| | 19,1 mm |
| | 35 - 40 Nm |
| Seal kit - Cartridge | Buna: 990-019-007 |
| Seal kit - Cartridge | Polyurethane: 990-019-002 |
| Seal kit - Cartridge | Viton: 990-019-006 |
| Seal kit - Cartridge | Buna: 990-019-007 |
| Seal kit - Cartridge | Polyurethane: 990-019-002 |
| Seal kit - Cartridge | Viton: 990-019-006 |

CONFIGURATION OPTIONS

Model Code Example: CBHGLJN

(L)

(J)

(N)

| | | |
|----------|---|------------|
| L | J 2000 - 5000 psi 25 psi (140 - 350 bar 1.7 bar) 3000 psi (210 bar) | N |
| | C 2000 - 5000 psi 4 psi (140 - 350 bar 0.3 bar) 3000 psi (210 bar) | V , |
| | D 1000 - 2500 psi 4 psi (70 - 175 bar 0.3 bar) 2000 psi (140 bar) | , |
| | K 1000 - 2500 psi 25 psi (70 - 175 bar 1.7 bar) 2000 psi (140 bar) | , |