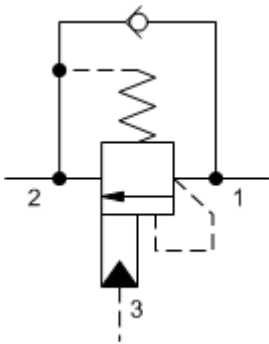
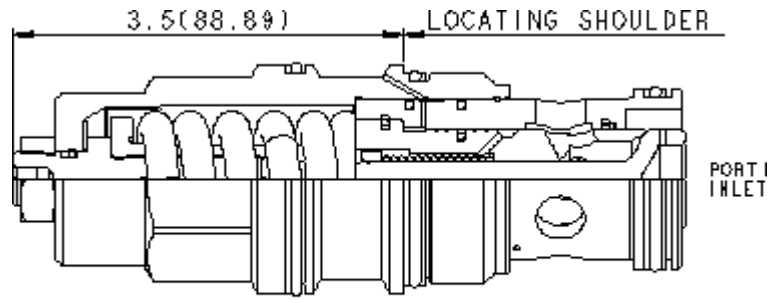


3-Port Non-vented



3-Port Non-vented, Fixed Setting



PORT 3 PILOT 2 1
PORT 2 OUTLET 1 2 3

TECHNICAL DATA NOTE: DATA MAY VARY BY CONFIGURATION. SEE CONFIGURATION SECTION.

	T-19A
	4
	480 L/min.
	4.5:1
	270 bar
	350 bar
	0,3 cc/min.
	30 cc/min.
	3.75
	>85% of setting
	41,3 mm
	474 - 508 Nm
	5,5 mm
	19,1 mm
	35 - 40 Nm
	1.36 kg.
Seal kit - Cartridge	Buna: 990-019-007
Seal kit - Cartridge	Polyurethane: 990-019-002
Seal kit - Cartridge	Viton: 990-019-006
Seal kit - Cartridge	Buna: 990-019-007
Seal kit - Cartridge	Polyurethane: 990-019-002
Seal kit - Cartridge	Viton: 990-019-006

OPTION SELECTION EXAMPLE: CBIGLJN

	(L)	(J)	(N)	MATERIAL/COATING
L	J	2000 - 5000 psi 25 psi (140 - bar 1.7 bar), 3000 psi (210 b	N	Standard Material/Coating
		C 2000 - 5000 psi 4 psi (140 - 350 bar 0.3 bar), 3000 psi (210 bar)	V	/AP
		D 1000 - 2500 psi 4 psi (70 - 175 bar 0.3 bar), 2000 psi (140 bar)		/LH

TECHNICAL FEATURES

- 1.3
- 200psi 14bar
- 2 1+ x
- 85%
- Sun
- 4psi 0.3bar
- 3
- Sun

PERFORMANCE CURVES

