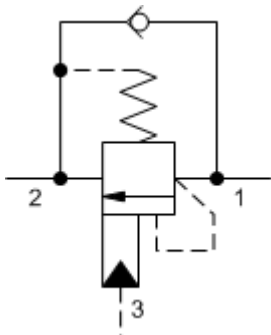
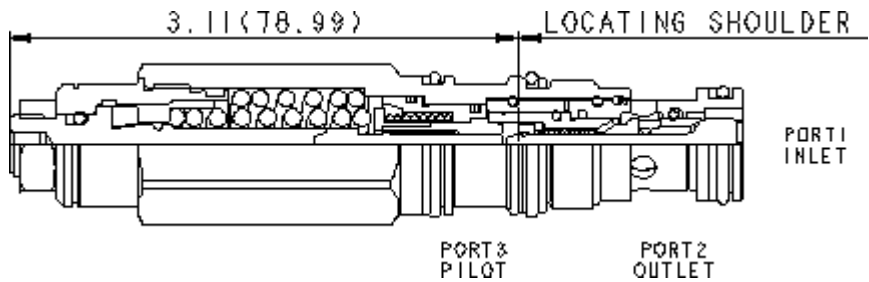


3-Port Non-vented



3-Port Non-vented, Fixed Setting



Counterbalance valves with pilot assist are meant to control an overrunning load. The check valve allows free flow from the directional valve (port 2) to the load (port 1) while a direct-acting, pilot-assisted relief valve controls flow from port 1 to port 2. Pilot assist at port 3 lowers the effective setting of the relief valve at a rate determined by the pilot ratio. The LoadAdaptive™ counterbalance valve has a higher pilot ratio when the load-induced pressure is less than the setting of the valve (is not moving yet) and when the moving load is a positive load (not overrunning). See P1-P3 diagrams under "Performance Curves." The P1 (Y axis) vs P3 (X axis) curves show the effective setting P1 of the valve for different flows depending on pilot pressure P3. [Click Here for LoadAdaptive Technical Tip](https://www.sunhydraulics.com/sites/default/files/media_library/tech_resources/TT_US_LAandLM.pdf) Other names for this valve include motion control valve and over-center valve.

**TECHNICAL DATA** NOTE: DATA MAY VARY BY CONFIGURATION. SEE CONFIGURATION SECTION.

Pilot Ratio	3:1
Adaptive Pilot Ratio	See Performance Curves
Maximum Recommended Load Pressure at Maximum Setting	3075 psi
Maximum Setting	4000 psi
Adjustment - No. of CCW Turns from Min. to Max. Setting	3.75
Factory Pressure Settings Established at	2 in <sup>3</sup> /min.
Maximum Valve Leakage at Reseat	5 drops/min.
Reseat	>85% of setting
Locknut Hex Size	9/16 in.
Locknut Torque	80 - 90 lbf in.
Seal kit - Cartridge	Buna: 990-011-007
Seal kit - Cartridge	Polyurethane: 990-011-002
Seal kit - Cartridge	Viton: 990-011-006

NOTES: • U.S. Patent #9,850,919

**CONFIGURATION OPTIONS**

**Model Code Example: CEBALHN**

CONTROL	(L) ADJUSTMENT RANGE	(H) SEAL MATERIAL	(N) MATERIAL/COATING
<b>L</b> Standard Screw Adjustment	<b>H</b> 1500 - 4000 psi w/ 25 psi check (105 - 280 bar w/ 1,7 bar Check), 3000 psi (210 bar) Standard Setting	<b>N</b> Buna-N	Standard Material/Coating
	<b>A</b> 1500 - 4000 psi w/ 4 psi check (105 - 280 bar w/ 0,3 bar Check), 3000 psi (210 bar) Standard Setting	<b>V</b> Viton	<b>IAP</b> Stainless Steel, Passivated