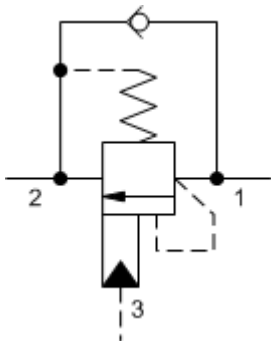
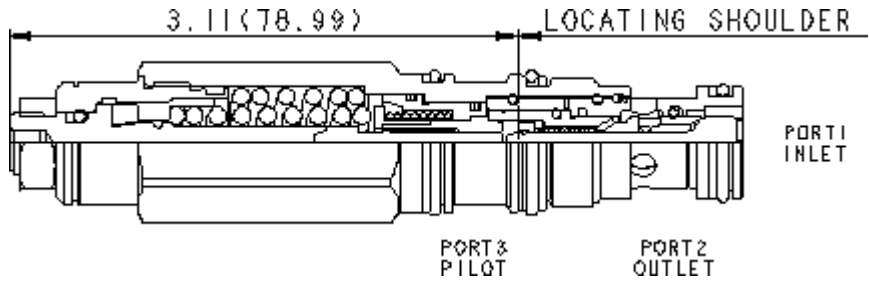


3-Port Non-vented



3-Port Non-vented, Fixed Setting



Counterbalance valves with pilot assist are meant to control an overrunning load. The check valve allows free flow from the directional valve (port 2) to the load (port 1) while a direct-acting, pilot-assisted relief valve controls flow from port 1 to port 2. Pilot assist at port 3 lowers the effective setting of the relief valve at a rate determined by the pilot ratio. The LoadAdaptive™ counterbalance valve has a higher pilot ratio when the load-induced pressure is less than the setting of the valve (is not moving yet) and when the moving load is a positive load (not overrunning). See P1-P3 diagrams under "Performance Curves." The P1 (Y axis) vs P3 (X axis) curves show the effective setting P1 of the valve for different flows depending on pilot pressure P3. [Click Here for LoadAdaptive Technical Tip](https://www.sunhydraulics.com/sites/default/files/media_library/tech_resources/TT_US_LAandLM.pdf) Other names for this valve include motion control valve and over-center valve.

TECHNICAL DATA NOTE: DATA MAY VARY BY CONFIGURATION. SEE CONFIGURATION SECTION.

Cavity	T-11A
Series	1
Capacity	5 gpm
Pilot Ratio	3:1
Adaptive Pilot Ratio	See Performance Curves
Maximum Recommended Load Pressure at Maximum Setting	3075 psi
Maximum Setting	4000 psi
Adjustment - No. of CCW Turns from Min. to Max. Setting	3.75
Factory Pressure Settings Established at	2 in ³ /min.
Maximum Valve Leakage at Reseat	5 drops/min.
Operating Characteristic	Restrictive
Reseat	>85% of setting
Valve Hex Size	7/8 in.
Valve Installation Torque	30 - 35 lbf ft
Adjustment Screw Internal Hex Size	5/32 in.
Locknut Hex Size	9/16 in.
Locknut Torque	80 - 90 lbf in.
Model Weight	0.52 lb.
Seal kit - Cartridge	Buna: 990-011-007
Seal kit - Cartridge	Polyurethane: 990-011-002
Seal kit - Cartridge	Viton: 990-011-006

NOTES: • U.S. Patent #9,850,919

OPTION SELECTION EXAMPLE: CEBALHN

CONTROL	(L) ADJUSTMENT RANGE	(H) SEAL MATERIAL	(N) MATERIAL/COATING
L Standard Screw Adjustment C Tamper Resistant - Factory Set	H 1500 - 4000 psi w/ 25 psi check (105 - 280 bar w/ 1,7 bar Check), 3000 psi (210 bar) Standard Setting A 1500 - 4000 psi w/ 4 psi check (105 - 280 bar w/ 0,3 bar Check), 3000 psi (210 bar) Standard Setting	N Buna-N V Viton	Standard Material/Coating IAP Stainless Steel, Passivated

TECHNICAL FEATURES

- Counterbalance valves should be set at least 1.3 times the maximum load induced pressure.
- Turn adjustment clockwise to decrease setting and release load.
- Full clockwise setting is less than 500 psi (35 bar).
- Backpressure at port 2 adds to the effective relief setting at a ratio of 1 plus the pilot ratio times the backpressure. NOTE: The ratio depends on the pilot pressure. With no pilot pressure, the backpressure is additive with a factor of 10.
- This valve does not have positive seals on the pilot section and will pass up to 4 in³/min.@1000 psi (65 ml/min.@70 bar) between port 2 and port 3. This is a consideration in master-slave circuits and in the leak testing of valve-cylinder assemblies.
- Sun counterbalance cartridges can be installed directly into a cavity machined in an actuator housing for added protection and improved stiffness in the circuit.
- Two check valve cracking pressures are available. Use the 25 psi (1,7 bar) check unless actuator cavitation is a concern.
- All 3-port counterbalance, load control, and pilot-to-open check cartridges are physically interchangeable (i.e. same flow path, same cavity for a given frame size).
- Reseat exceeds 85% of set pressure when the valve is standard set. Settings lower than the standard set pressure may result in lower reseal percentages.
- Incorporates the Sun floating style construction to minimize the possibility of internal parts binding due to excessive installation torque and/or cavity/cartridge machining variations.

PERFORMANCE CURVES

