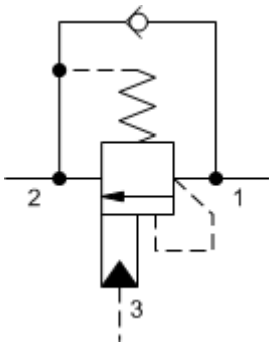
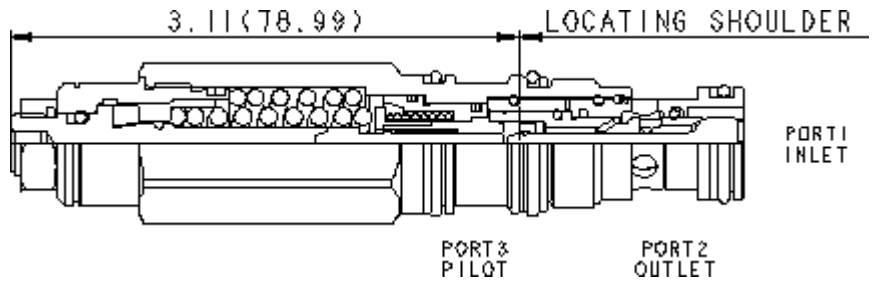


3-Port Non-vented



3-Port Non-vented, Fixed Setting



TECHNICAL DATA NOTE: DATA MAY VARY BY CONFIGURATION. SEE CONFIGURATION SECTION.

Pilot Ratio	3:1
Adaptive Pilot Ratio	See Performance Curves
Maximum Recommended Load Pressure at Maximum Setting	215 bar
Maximum Setting	280 bar
Adjustment - No. of CCW Turns from Min. to Max. Setting	3.75
Factory Pressure Settings Established at	30 cc/min.
Maximum Valve Leakage at Reseat	0,3 cc/min.
Reseat	>85% of setting
Locknut Hex Size	15 mm
Locknut Torque	9 - 10 Nm
Seal kit - Cartridge	Buna: 990-011-007
Seal kit - Cartridge	Polyurethane: 990-011-002
Seal kit - Cartridge	Viton: 990-011-006
Seal kit - Cartridge	Buna: 990-011-007
Seal kit - Cartridge	Polyurethane: 990-011-002
Seal kit - Cartridge	Viton: 990-011-006

CONFIGURATION OPTIONS

CONTROL

- L** Standard Screw Adjustment
- C** Tamper Resistant - Factory Set

(L)

Model Code Example: CECALHN

ADJUSTMENT RANGE

- H** 1500 - 4000 psi w/ 25 psi check (105 - 280 bar w/ 1,7 bar Check), 3000 psi (210 bar) Standard Setting
- A** 1500 - 4000 psi w/ 4 psi check (105 - 280 bar w/ 0,3 bar Check), 3000 psi (210 bar) Standard Setting

(H)

SEAL MATERIAL

- N** Buna-N
- V** Viton

(N)

MATERIAL/COATING

- Standard Material/Coating**
- /AP** Stainless Steel, Passivated