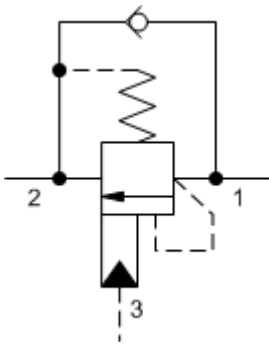
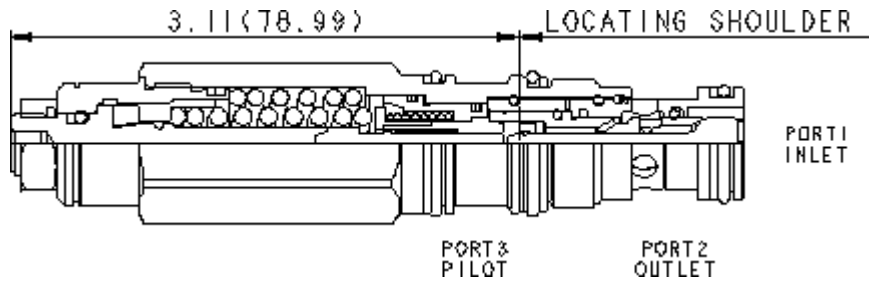


3-Port Non-vented



3-Port Non-vented, Fixed Setting



TECHNICAL DATA NOTE: DATA MAY VARY BY CONFIGURATION. SEE CONFIGURATION SECTION.

	3:1
	See Performance Curves
	215 bar
	280 bar
	0,3 cc/min.
	30 cc/min.
	3.75
	>85% of setting
	15 mm
	9 - 10 Nm
Seal kit - Cartridge	Buna: 990-011-007
Seal kit - Cartridge	Polyurethane: 990-011-002
Seal kit - Cartridge	Viton: 990-011-006
Seal kit - Cartridge	Buna: 990-011-007
Seal kit - Cartridge	Polyurethane: 990-011-002
Seal kit - Cartridge	Viton: 990-011-006

: • #9,850,919

CONFIGURATION OPTIONS

Model Code Example: **CECALHN**

(L)	(H)	(N)	MATERIAL/COATING
L	H 1500 - 4000 psi 25 psi (105 - bar 1.7 bar), 3000 psi (210 b	N	Standard Material/Coating
	A 1500 - 4000 psi 4 psi (105 - 280 bar 0.3 bar), 3000 psi (210 bar)	V	/AP