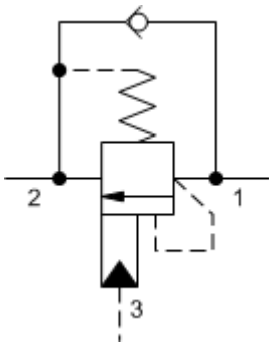
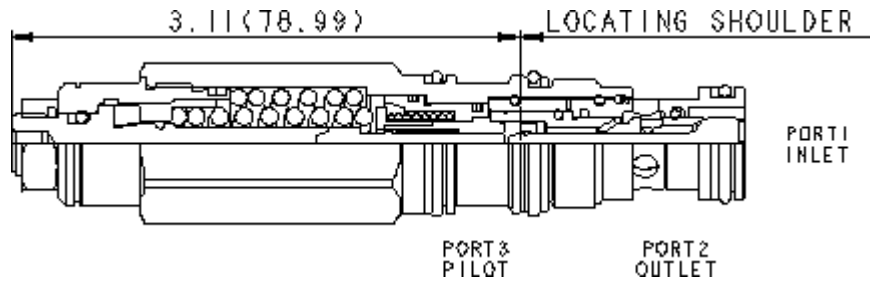


3-Port Non-vented



3-Port Non-vented, Fixed Setting



**TECHNICAL DATA** NOTE: DATA MAY VARY BY CONFIGURATION. SEE CONFIGURATION SECTION.

	T-11A
	1
	60 L/min.
	3:1
	See Performance Curves
	215 bar
	280 bar
	0,3 cc/min.
	30 cc/min.
	3.75
	>85% of setting
	22,2 mm
	41 - 47 Nm
	4 mm
	15 mm
	9 - 10 Nm
	0.23 kg.
Seal kit - Cartridge	Buna: 990-011-007
Seal kit - Cartridge	Polyurethane: 990-011-002
Seal kit - Cartridge	Viton: 990-011-006
Seal kit - Cartridge	Buna: 990-011-007
Seal kit - Cartridge	Polyurethane: 990-011-002
Seal kit - Cartridge	Viton: 990-011-006

: • #9,850,919

# OPTION SELECTION EXAMPLE: CECALHN

	(L)	(H)	(N)	MATERIAL/COATING
<b>L</b>		<b>H</b> 1500 - 4000 psi 25 psi (105 - bar 1.7 bar), 3000 psi (210 b <b>A</b> 1500 - 4000 psi 4 psi (105 - 280 bar 0.3 bar), 3000 psi (210 bar)	<b>N</b> V	Standard Material/Coating <b>/AP</b>

## TECHNICAL FEATURES

- 1.3
- 
- 500 psi (35 bar)
- 2 1+ x 10
- 3 2 4 in<sup>3</sup>/min@1000 psi (65 ml/min.@70 bar)
- Sun 4psi 0.3bar
- 3
- 85%
- Sun

## PERFORMANCE CURVES

