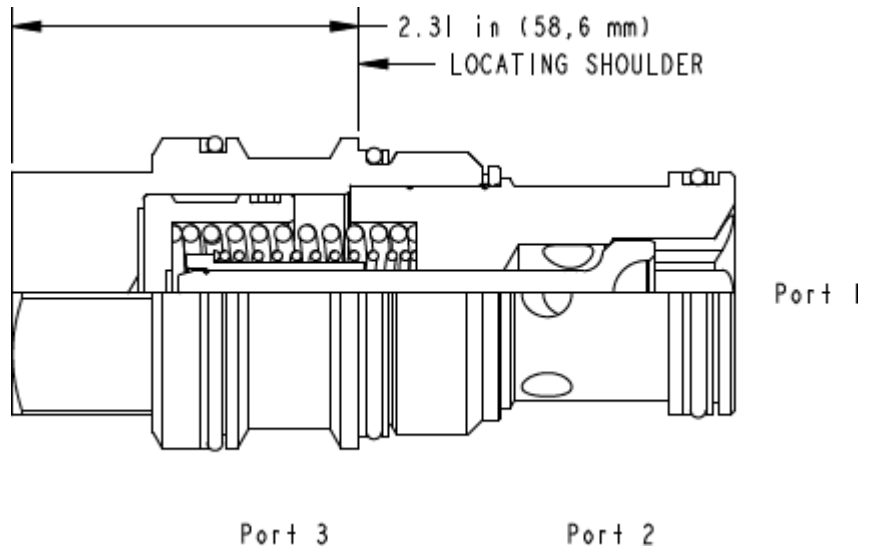


CONFIGURATION

X	Control	piloto estándar
C	Cracking Pressure	30 psi (2 bar)
N	Seal Material	Buna-N
	Material/Coating	



TECHNICAL DATA NOTE: DATA MAY VARY BY CONFIGURATION. SEE CONFIGURATION SECTION.

cavidad	T-19A
Series	4
Capacity	480 L/min.
Maximum Operating Pressure	350 bar
Pilot Ratio	3:1
Maximum Valve Leakage at 110 SUS (24 cSt)	0,07 cc/min.
Valve Hex Size	41,3 mm
Valve Installation Torque	474 - 508 Nm
Model Weight	1.20 kg.
Seal kit - Cartridge	Buna: 990-019-007
Seal kit - Cartridge	EPDM: 990-019-014
Seal kit - Cartridge	Polyurethane: 990-019-002
Seal kit - Cartridge	Viton: 990-019-006

OPTION SELECTION EXAMPLE: CKIBXCN

CONTROL	(X)	CRACKING PRESSURE	(C)	SEAL MATERIAL	(N)	MATERIAL/COATING	(/LH)
X piloto estándar		C 30 psi (2 bar)		N Buna-N		/LH Mild Steel, Zinc-Nickel	
L Manual Load Release		A 4 psi (0,3 bar)		E EPDM		/AP Stainless Steel, Passivated	
		B 15 psi (1 bar)		V Viton		Standard Material/Coating	
		D 50 psi (3,5 bar)					
		E 75 psi (5 bar)					
		F 100 psi (7 bar)					
		Z 1 psi (0,07 bar)					

PERFORMANCE CURVES

