

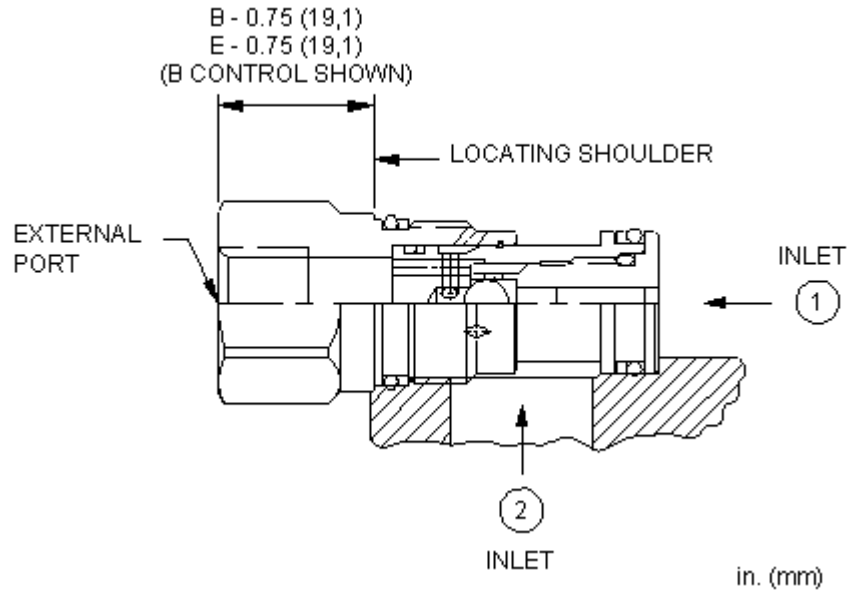
**CONFIGURATION**

\_\_\_\_\_

\_\_\_\_\_

\_\_\_\_\_

Material/Coating



**TECHNICAL DATA** NOTE: DATA MAY VARY BY CONFIGURATION. SEE CONFIGURATION SECTION.

	T-13A
	1
	10 L/min.
	350 bar
110 SUS (24 cSt)	0,3 cc/min.
	22,2 mm
	41 - 47 Nm
	0,10 kg
Seal kit - Cartridge	Buna: 990-010-007
Seal kit - Cartridge	Polyurethane: 990-010-002
Seal kit - Cartridge	Viton: 990-010-006
Seal kit - Cartridge	Buna: 990-010-007
Seal kit - Cartridge	Polyurethane: 990-010-002
Seal kit - Cartridge	Viton: 990-010-006

## OPTION SELECTION EXAMPLE: CSAAXN

	(E)	(X)	(N)	(MATERIAL/COATING)	(/LH)
<b>E</b>	4-SAE	<b>X</b>	<b>N</b>	/LH	-
<b>B</b>	1/4 BSPP		E EPDM V	/AP	Standard Material/Coating

### TECHNICAL FEATURES

- 
- 
- Sun

### PERFORMANCE CURVES

