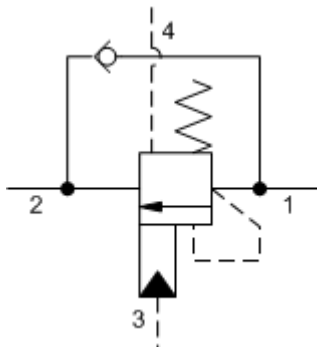
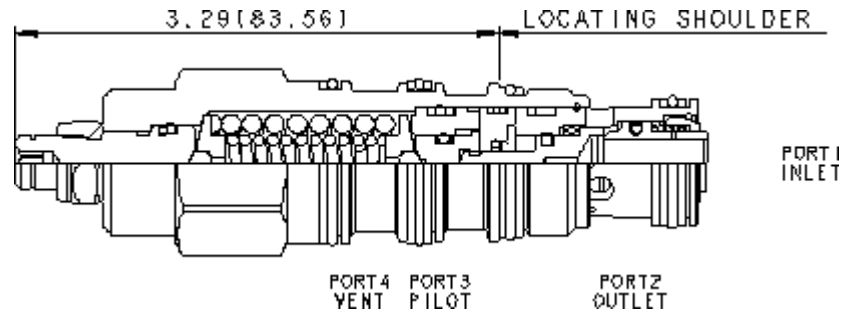


4-Port Vented



4-Port Vented, Non-adjustable



**TECHNICAL DATA** NOTE: DATA MAY VARY BY CONFIGURATION. SEE CONFIGURATION SECTION.

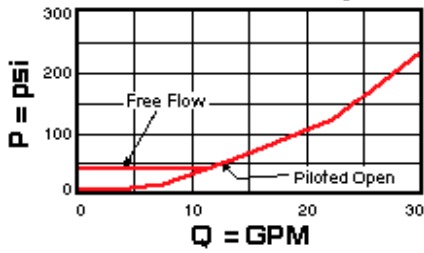
cavidad	T-22A
Series	2
Capacity	120 L/min.
Pilot Ratio	5:1
Maximum Recommended Load Pressure at Maximum Setting	320 bar
Maximum Setting	420 bar
Adjustment - No. of CCW Turns from Min. to Max. Setting	5
Check Cracking Pressure	1,7 bar
Factory Pressure Settings Established at	30 cc/min.
Maximum Valve Leakage at Reseat	0,3 cc/min.
Operating Characteristic	estándar
Reseat	>85% of setting
Valve Hex Size	28,6 mm
Valve Installation Torque	61 - 68 Nm
Adjustment Screw Internal Hex Size	4 mm
Locknut Hex Size	15 mm
Locknut Torque	9 - 10 Nm
Model Weight	0.36 kg.
Seal kit - Cartridge	Buna: 990-022-007
Seal kit - Cartridge	Polyurethane: 990-022-002
Seal kit - Cartridge	Viton: 990-022-006
Seal kit - Cartridge	Buna: 990-022-007
Seal kit - Cartridge	Polyurethane: 990-022-002
Seal kit - Cartridge	Viton: 990-022-006

# OPTION SELECTION EXAMPLE: CWEGLGN

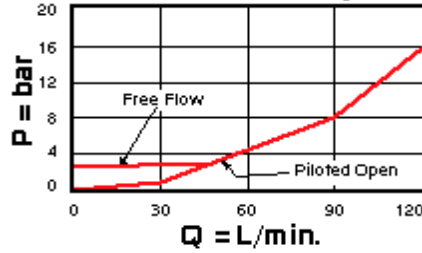
CONTROL	(L) FUNCTIONAL SETTING RANGE	(G) SEAL MATERIAL	(N) MATERIAL/COATING
<b>L</b> Standard Screw Adjustment	<b>G</b> 2000 - 6000 psi (140 - 420 bar), 4000 psi (280 bar) Standard Setting	<b>N</b> Buna-N	Standard Material/Coating
<b>C</b> Tamper Resistant - Factory Set		<b>V</b> Viton	<b>/AP</b> Stainless Steel, Passivated <b>/LH</b> Mild Steel, Zinc-Nickel
	<b>F</b> 1000 - 2500 psi (70 - 175 bar), 2000 psi (140 bar) Standard Setting		

## PERFORMANCE CURVES

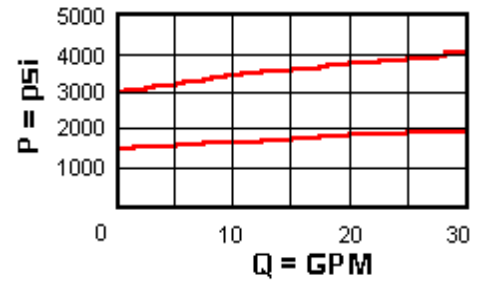
**Free Flow and Piloted Open Pressure Drop**



**Free Flow and Piloted Open Pressure Drop**



**Typical Relief Characteristics**



**Typical Relief Characteristics**

