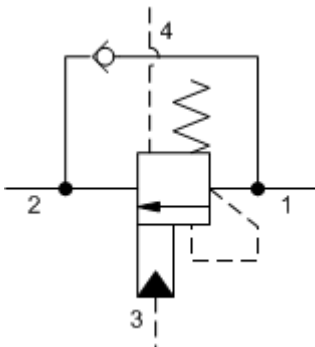
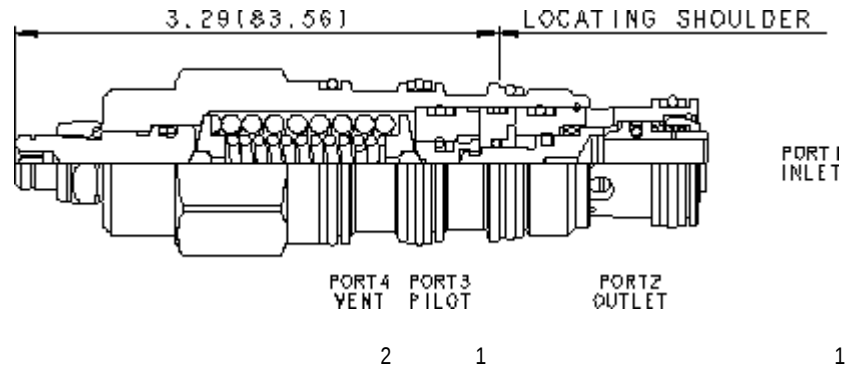


4-Port Vented



4-Port Vented, Non-adjustable



**TECHNICAL DATA** NOTE: DATA MAY VARY BY CONFIGURATION. SEE CONFIGURATION SECTION.

	T-22A
	2
	120 L/min.
	1:1
	215 bar
	280 bar
	1,7 bar
	0,3 cc/min.
	30 cc/min.
	5
	>85% of setting
	28,6 mm
	61 - 68 Nm
	4 mm
	15 mm
	9 - 10 Nm
	0.36 kg.
Seal kit - Cartridge	Buna: 990-022-007
Seal kit - Cartridge	Polyurethane: 990-022-002
Seal kit - Cartridge	Viton: 990-022-006
Seal kit - Cartridge	Buna: 990-022-007
Seal kit - Cartridge	Polyurethane: 990-022-002
Seal kit - Cartridge	Viton: 990-022-006

# OPTION SELECTION EXAMPLE: CWEKLHN

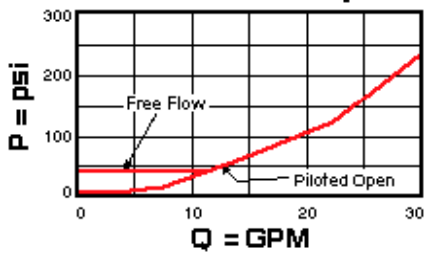
	(L)	(H)	(N)	MATERIAL/COATING
<b>L</b>	<b>H</b>	1000 - 4000 psi (70 - 280 bar), 3000 psi (210 bar)	<b>N</b>	Standard Material/Coating
		I 400 - 1500 psi (28 - 105 bar), 1000 psi (70 bar)	<b>V</b>	/LH -

## TECHNICAL FEATURES

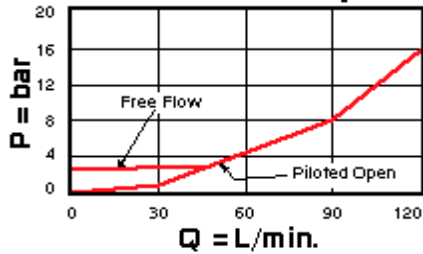
- 1.3
- 
- 200psi 14bar
- 4
- 85%
- 4 1+ x
- Sun
- 
- 
- Sun

## PERFORMANCE CURVES

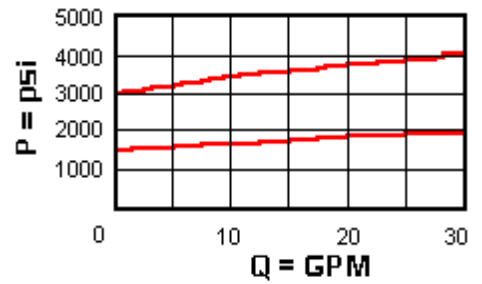
**Free Flow and Piloted Open Pressure Drop**



**Free Flow and Piloted Open Pressure Drop**



**Typical Relief Characteristics**



**Typical Relief Characteristics**

