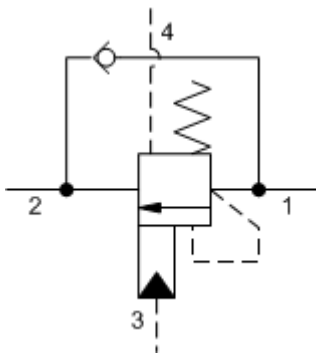
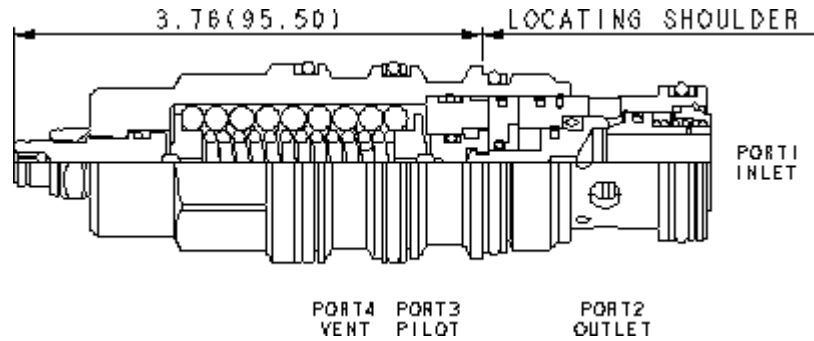


4-Port Vented



4-Port Vented, Non-adjustable



Vented counterbalance valves with pilot assist are meant to control an overrunning load. The check valve allows free flow from the directional valve (port 2) to the load (port 1) while a direct-acting, pilot-assisted relief valve controls flow from port 1 to port 2. Pilot assist at port 3 lowers the effective setting of the relief valve at a rate determined by the pilot ratio. Backpressure at port 2 does not affect the valve setting because the spring chamber references the vent (port 4). Other names for this valve include motion control valve and over-center valve.

TECHNICAL DATA

| | |
|---|---------------------------|
| Pilot Ratio | 5:1 |
| Maximum Recommended Load Pressure at Maximum Setting | 4615 psi |
| Maximum Setting | 6000 psi |
| Adjustment - No. of CCW Turns from Min. to Max. Setting | 5 |
| Check Cracking Pressure | 25 psi |
| Factory Pressure Settings Established at | 2 in ³ /min. |
| Maximum Valve Leakage at Reseat | 5 drops/min. |
| Reseat | >85% of setting |
| Locknut Hex Size | 9/16 in. |
| Locknut Torque | 80 - 90 lbf in. |
| Seal kit - Cartridge | Buna: 990-023-007 |
| Seal kit - Cartridge | Polyurethane: 990-023-002 |
| Seal kit - Cartridge | Viton: 990-023-006 |

CONFIGURATION

| | |
|----------------------------|--|
| L Control | Standard Screw Adjustment |
| G Functional Setting Range | 2000 - 6000 psi (140 - 420 bar), 4000 psi (280 bar) Standard Setting |

CONFIGURATION OPTIONS

Model Code Example: CWGGLGN

| | | | |
|----------------------------------|-----|--|-----|
| CONTROL | (L) | FUNCTIONAL SETTING RANGE | (G) |
| L Standard Screw Adjustment | | G 2000 - 6000 psi (140 - 420 bar), 4000 psi (280 bar) Standard Setting | |
| C Tamper Resistant - Factory Set | | F 1000 - 2500 psi (70 - 175 bar), 2000 psi (140 bar) Standard Setting | |