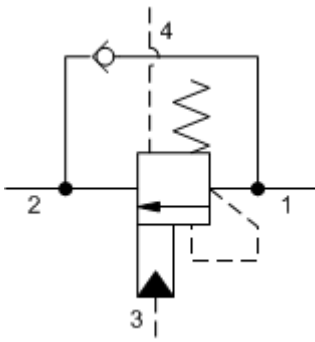
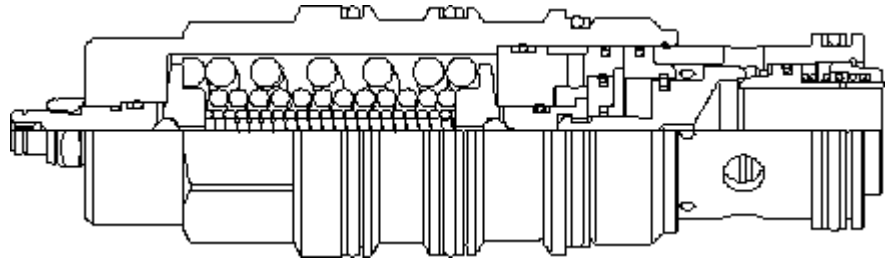


4-Port Vented



4-Port Vented, Non-adjustable



TECHNICAL DATA NOTE: DATA MAY VARY BY CONFIGURATION. SEE CONFIGURATION SECTION.

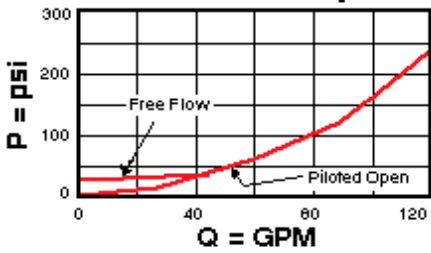
cavidad	T-24A
Series	4
Capacity	480 L/min.
Pilot Ratio	2:1
Maximum Recommended Load Pressure at Maximum Setting	320 bar
Maximum Setting	420 bar
Adjustment - No. of CCW Turns from Min. to Max. Setting	5
Check Cracking Pressure	1,5 bar
Factory Pressure Settings Established at	30 cc/min.
Maximum Valve Leakage at Reseat	0,3 cc/min.
Operating Characteristic	estándar
Reseat	>85% of setting
Valve Hex Size	41,3 mm
Valve Installation Torque	474 - 508 Nm
Adjustment Screw Internal Hex Size	4 mm
Locknut Hex Size	15 mm
Locknut Torque	9 - 10 Nm
Model Weight	1,59 kg.
Seal kit - Cartridge	Buna: 990-024-007
Seal kit - Cartridge	Polyurethane: 990-024-002
Seal kit - Cartridge	Viton: 990-024-006
Seal kit - Cartridge	Buna: 990-024-007
Seal kit - Cartridge	Polyurethane: 990-024-002
Seal kit - Cartridge	Viton: 990-024-006

OPTION SELECTION EXAMPLE: CWILLGN

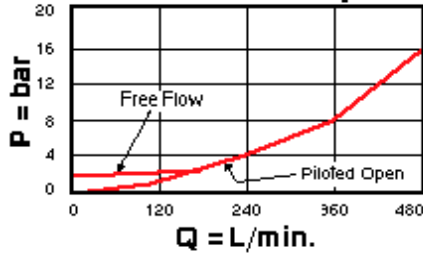
CONTROL	(L) FUNCTIONAL SETTING RANGE	(G) SEAL MATERIAL	(N) MATERIAL/COATING
L Standard Screw Adjustment	G 2000 - 6000 psi (140 - 420 bar), 4000 psi (280 bar) Standard Setting	N Buna-N	Standard Material/Coating
C Tamper Resistant - Factory Set		E EPDM	/AP Stainless Steel, Passivated
	F 1000 - 2500 psi (70 - 175 bar), 2000 psi (140 bar) Standard Setting	V Viton	/LH Mild Steel, Zinc-Nickel

PERFORMANCE CURVES

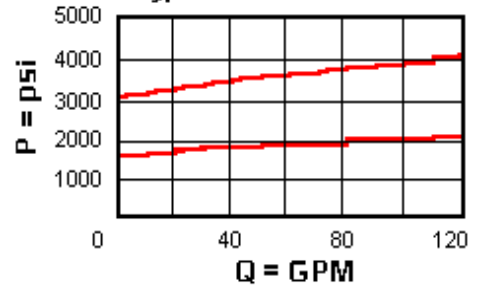
Free Flow and Piloted Open Pressure Drop



Free Flow and Piloted Open Pressure Drop



Typical Relief Characteristics



Typical Relief Characteristics

