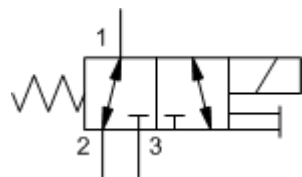
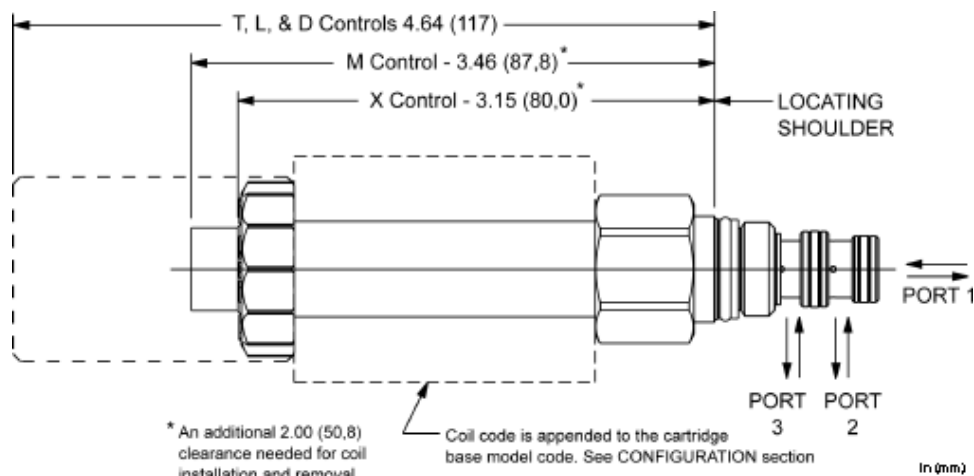


X-Control, H-Spool



M-Control, H-Spool



This solenoid-operated 3-way, 2-position cartridge is a direct-acting, balanced spool pilot valve used to pilot other full-flow valves. The valve is normally open between port 1 and port 2 or port 1 and port 3 and all flow paths are bidirectional. This valve is designed to be used with 740 and 747 Series coils.

#### TECHNICAL DATA NOTE: DATA MAY VARY BY CONFIGURATION. SEE CONFIGURATION SECTION.

Maximum Operating Pressure	5000 psi
Manual Override Force Requirement	10 lbs/1000 psi @ Port 1
Manual Override Stroke	.10 in.
Maximum Valve Leakage at 110 SUS (24 cSt)	10 drops/min.@5000 psi
Response Time - Typical	50 ms
Switching Frequency	15,000 max. cycles/hr
Seal kit - Cartridge	Buna: 990-009-007
Seal kit - Cartridge	EPDM: 990-009-014
Seal kit - Cartridge	Polyurethane: 990-009-002
Seal kit - Cartridge	Viton: 990-009-006

- NOTES:**
- Please verify cartridge clearance requirements when choosing a Sun manifold. Different valve controls and coils require different clearances.
  - An additional 2.00 inches (50,8 mm) beyond the valve extension is needed for coil installation and removal.

#### CONFIGURATION OPTIONS

#### Model Code Example: DBAFMXCN

CONTROL	(M)	SPOOL CONFIGURATION	(C)	SEAL MATERIAL	(N)	COIL *
<b>M</b> Manual Override (Standard)		<b>C</b> Normally Closed		<b>N</b> Buna-N		No coil
<b>D</b> Twist/Lock (Dual) Manual Override		<b>H</b> Normally Open		<b>E</b> EPDM		* Additional coil options are available
<b>L</b> Twist/Lock (Detent) Manual Override				<b>V</b> Viton		
<b>T</b> Twist (Momentary) Manual Override						
<b>X</b> No Manual Override						