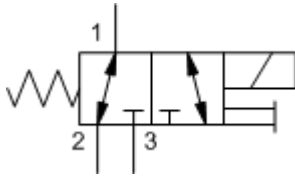
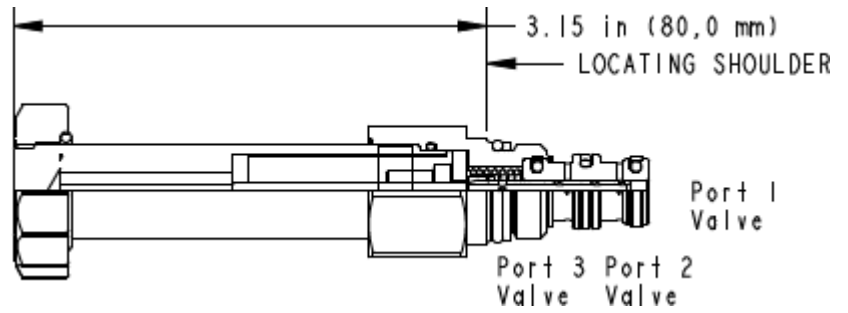


X-Control, H-Spool



M-Control, H-Spool



TECHNICAL DATA NOTE: DATA MAY VARY BY CONFIGURATION. SEE CONFIGURATION SECTION.

cavidad	T-9A
Series	P
Capacity	1 L/min.
Maximum Operating Pressure	350 bar
Manual Override Force Requirement	66 N/100 bar @ Port 1
Manual Override Stroke	2,5 mm
Maximum Valve Leakage at 110 SUS (24 cSt)	0,7 cc/min. @350 bar
Response Time - Typical	50 ms
Switching Frequency	15,000 max. cycles/hr
Solenoid Tube Diameter	16 mm
Valve Hex Size	22,2 mm
Valve Installation Torque	27 - 33 Nm
Seal kit - Cartridge	Buna: 990-009-007
Seal kit - Cartridge	EPDM: 990-009-014
Seal kit - Cartridge	Polyurethane: 990-009-002
Seal kit - Cartridge	Viton: 990-009-006

OPTION SELECTION EXAMPLE: DBAFXHN

CONTROL	(X) SPOOL CONFIGURATION	(H) SEAL MATERIAL	(N) BOBINA
X No Manual Override	H normalmente abierto	N Buna-N	No coil
D Twist/Lock (Dual) Manual Override	C normalmente cerrado	E EPDM	
L Twist/Lock (Detent) Manual Override		V Viton	
M Manual Override (Standard)			
T Twist (Momentary) Manual Override			

PERFORMANCE CURVES

