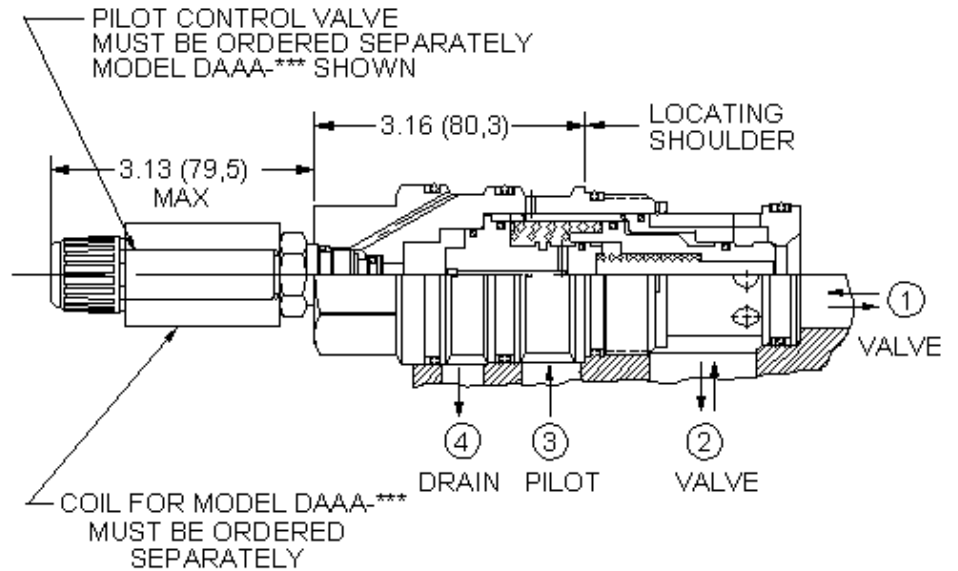


## CONFIGURATION

<b>H</b>	Minimum Control Pressure	300 psi (20 bar)
<b>N</b>	Seal Material	Buna-N



This is a normally closed, balanced poppet, switching element with an integral T-8A control cavity. With a 2-way valve in the closed position installed in the T-8A control cavity, the poppet remains closed. Opening the 2-way valve shifts the poppet to the open position, provided there is sufficient pressure at port 3.

## TECHNICAL DATA

Maximum Operating Pressure	5000 psi
Minimum Pilot Pressure Required to Shift Valve	300 psi
Control Pilot Flow	See Performance Data
Maximum Valve Leakage at 110 SUS (24 cSt)	10 drops/min.@5000 psi
Pilot Control Cavity	T-8A
Pilot Control Valve Hex Size	7/8 in.
Pilot Control Valve Installation Torque	20 - 25 lbf ft
Seal kit - Cartridge	Buna: 990-024-007
Seal kit - Cartridge	Polyurethane: 990-024-002
Seal kit - Cartridge	Viton: 990-024-006

**NOTES:** • Compound cartridge (pilot and main stage) assembly information is provided for reference only. Cartridges must be ordered separately and assembled at point of use.

## CONFIGURATION OPTIONS

Model Code Example: **DKJR8HN**

MINIMUM CONTROL PRESSURE

(H)

SEAL MATERIAL

(N)

**H** 300 psi (20 bar)

**N** Buna-N

**V** Viton