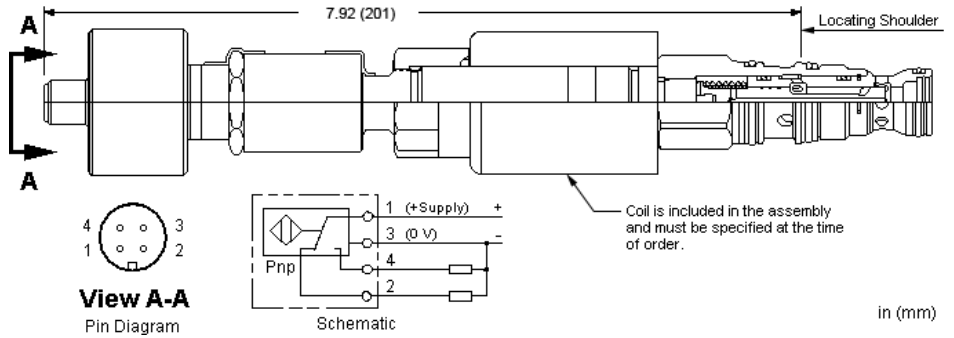


Z-Control, B-Spool



in (mm)

TECHNICAL DATA NOTE: DATA MAY VARY BY CONFIGURATION. SEE CONFIGURATION SECTION.

Maximum Operating Pressure	350 bar
Maximum Valve Leakage at 110 SUS (24 cSt)	80 cc/min.@210 bar
Response Time - Typical	50 ms
Switching Frequency	15,000 max. cycles/hr
Seal kit - Cartridge	Buna: 990-411-007
Seal kit - Cartridge	EPDM: 990-411-014
Seal kit - Cartridge	Viton: 990-411-006

CONFIGURATION OPTIONS

Model Code Example: **DMDAZN**

SEAL MATERIAL

(N)

- N Buna-N
- E EPDM
- V Viton