

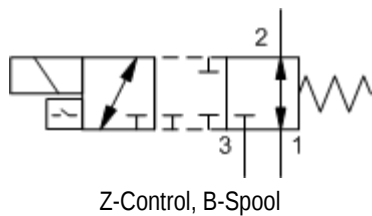


MODEL  
**DMDAZ**

3-way, solenoid-operated directional spool valve with position switch  
**CAPACITY: 12 gpm / CAVITY: T-11A**

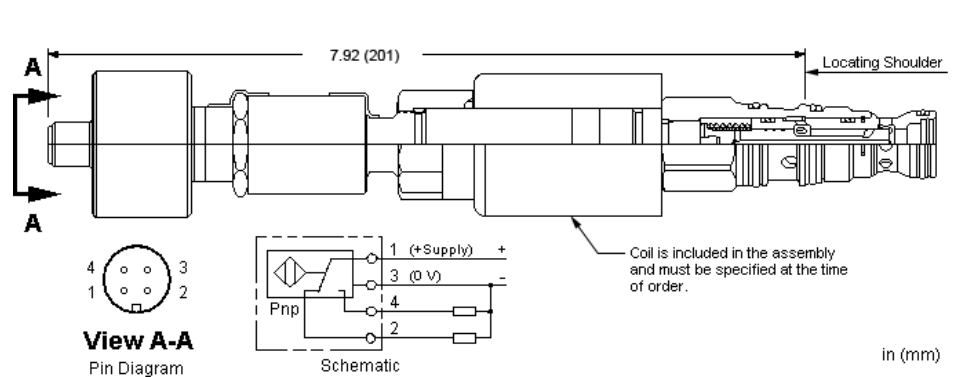


[sunhydraulics.com/model/DMDAZ](https://sunhydraulics.com/model/DMDAZ)



## CONFIGURATION

Spool Configuration
Seal Material
Coil



This solenoid-operated 3-way, 2-position cartridge is a direct-acting, balanced spool directional valve. The transition between positions is closed. The closed transition greatly reduces the loss of oil when shifting which can be of particular importance in pilot control circuits. The position switch provides confirmation that the valve is in the spring biased position. [Click Here for the position sensor pin diagram](https://www.sunhydraulics.com/tech-resources/position-sensor-pin-diagram)

## SWITCH SPECIFICATIONS

Supply Voltage	20-30 VDC
Operating Temperature Range	-25 to 80 °C
Vibration	≥ 50g, 0-500 impulses/sec
Shock	>50 g, 1ms
Reverse Polarity Protection	Yes
Maximum Output Load	≤ 400 mA, Duty Ratio 100%
Short Circuit Protection	Yes, Load Short Unlimited
Turn On Time	≤ 25 ms
Hysteresis	≤ .002 in.
Thermal Shift - 0 to 80 °C ≤ ±	.004 in.
EMC	DIN EN 61000-6-1/2/3/4
Connector	M12 X 1 (4) Pin
Connector Environment Rating	IP65

## TECHNICAL DATA

NOTE: DATA MAY VARY BY CONFIGURATION. SEE CONFIGURATION SECTION.

Cavity	T-11A
Series	1
Capacity	12 gpm
Maximum Operating Pressure	5000 psi
Maximum Valve Leakage at 110 SUS (24 cSt)	5 in <sup>3</sup> /min.@3000 psi
Response Time - Typical	50 ms
Switching Frequency	15,000 max. cycles/hr
Solenoid Tube Diameter	.75 in.
Valve Hex Size	7/8 in.
Valve Installation Torque	30 - 35 lbf ft
Model Weight	.50 lb
Seal kit - Cartridge	Buna: 990-411-007
Seal kit - Cartridge	EPDM: 990-411-014
Seal kit - Cartridge	Viton: 990-411-006

**NOTES:** • An additional 2.00 inches (50,8 mm) beyond the valve extension is needed for coil installation and removal.

---

## OPTION SELECTION EXAMPLE: DMDAZN211

SPOOL CONFIGURATION	(R) SEAL MATERIAL	(N) COIL	(912)
<b>R</b> Normally Open 2 to 3, Closed 1 to 2, Closed Transition	<b>N</b> Buna-N	<b>912</b> Deutsch DT04-2P, 12 VDC	
<b>B</b> Normally Open 1 to 2, Closed 2 to 3, Closed Transition	<b>E</b> EPDM	<b>211</b> DIN 43650-Form A, 115 VAC	
	<b>V</b> Viton	<b>212</b> DIN 43650-Form A, 12 VDC	
		<b>224</b> DIN 43650-Form A, 24 VDC	
		<b>924</b> Deutsch DT04-2P, 24 VDC	

### TECHNICAL FEATURES

- A coil must be ordered with this cartridge. This cartridge is supplied as a sealed, factory set unit and is not field serviceable. If the assembly requires changes or service it needs to be returned to the factory. Any tampering will violate the product warranty.
- Position switch is CE approved.
- When torquing this cartridge into its cavity, a crow's foot wrench or similar will be required since the position switch precludes the use of a deep socket wrench.
- The solenoid tube assembly is fatigue rated for 5000 psi (350 bar) service.
- This valve is direct actuated and requires no minimum hydraulic pressure for operation.
- Cartridges configured with EPDM seals are for use in systems with phosphate ester fluids. Exposure to petroleum based fluids, greases and lubricants will damage the seals.
- This valve utilizes a wet armature design. This means that the working fluid surrounds the armature and is exposed to the heat generated by the coil. This can be a factor if the coil is energized for long periods of time. Some fluids, notably water/glycol mixtures, break down at these temperatures over time and form varnishes that will affect the function of the cartridge.
- A wide variety of coil termination and voltage options are available, with and without surge protection. See the CONFIGURATION section.
- The solenoid's unique magnetic design results in a high efficiency solenoid, yielding high spool actuating force per Watt expended, leading to reliable valve shifting.
- Incorporates the Sun floating style construction to minimize the possibility of internal parts binding due to excessive installation torque and/or cavity/cartridge machining variations.

### PERFORMANCE CURVES

