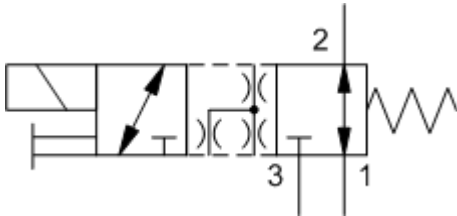
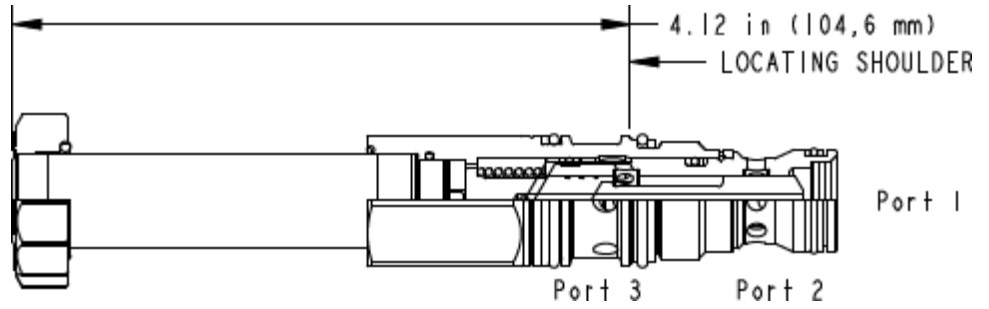


X-Control, A-Spool



M or S-Control, A-Spool



TECHNICAL DATA NOTE: DATA MAY VARY BY CONFIGURATION. SEE CONFIGURATION SECTION.

cavidad	T-11A
Series	1
Capacity	45 L/min.
Maximum Operating Pressure	350 bar
Manual Override Force Requirement	33 N/100 bar @ Port 1
Manual Override Stroke	2,5 mm
Maximum Valve Leakage at 110 SUS (24 cSt)	80 cc/min. @210 bar
Response Time - Typical	50 ms
Switching Frequency	15,000 max. cycles/hr
Solenoid Tube Diameter	16 mm
Valve Hex Size	22,2 mm
Valve Installation Torque	41 - 47 Nm
Model Weight	0.28 kg.
Seal and nut kit - Coil	Viton: 990-740-006
Seal kit - Cartridge	Buna: 990-411-007
Seal kit - Cartridge	Viton: 990-411-006

OPTION SELECTION EXAMPLE: DMDFXAN

CONTROL	(X) SPOOL CONFIGURATION	(A) SEAL MATERIAL	(N) BOBINA
X No Manual Override	A Normally Open 1 to 2, Closed 2 to 3	N Buna-N	No coil
D Twist/Lock (Dual) Manual Override	N Normally Open 2 to 3, Closed 1 to 2	V Viton	
L Twist/Lock (Detent) Manual Override			
M activador manual	R Normally Open 2 to 3, Closed 1 to 2, Closed Transition		
T Twist (Momentary) Manual Override			

PERFORMANCE CURVES

