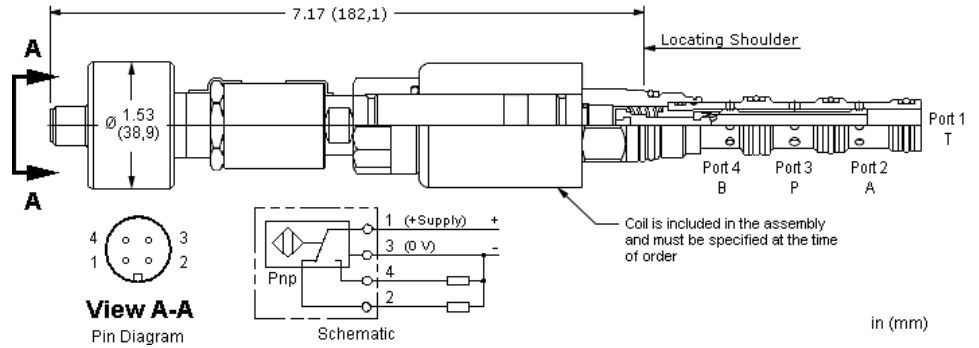


**CONFIGURATION**

<b>N</b>	Seal Material	Buna-N
<b>211</b>	Coil	DIN 43650-Form A, 115 VAC



This solenoid-operated, 4-way, 2-position cartridge is a direct-acting, balanced spool directional valve. The transition between positions is closed. The closed transition greatly reduces the loss of oil when shifting which can be of particular importance in pilot control circuits. The position switch provides confirmation that the valve is in the spring biased position. [Click Here for the position sensor pin diagram](https://www.sunhydraulics.com/tech-resources/position-sensor-pin-diagram)

**TECHNICAL DATA**

Maximum Operating Pressure	5000 psi
Maximum Valve Leakage at 110 SUS (24 cSt)	10 in <sup>3</sup> /min. @3000 psi
Response Time - Typical	50 ms
Switching Frequency	15,000 max. cycles/hr
Seal kit - Cartridge	Buna: 990-431-007
Seal kit - Cartridge	Viton: 990-431-006

**CONFIGURATION OPTIONS**

Model Code Example: DNCAZN211

SEAL MATERIAL

(N) COIL \*

- N** Buna-N
- V Viton

- No coil
- \* Additional coil options are available