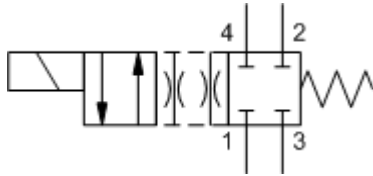
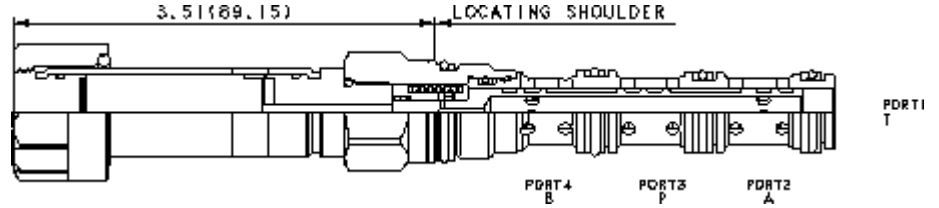


X-Control, N-Spool



X-Control, C-Spool



This solenoid-operated 4-way, 2-position cartridge is a direct-acting, balanced spool directional valve.

TECHNICAL DATA NOTE: DATA MAY VARY BY CONFIGURATION. SEE CONFIGURATION SECTION.

Maximum Operating Pressure	5000 psi
Manual Override Force Requirement	5 lbs/1000 psi @ Port 1
Manual Override Stroke	.10 in.
Maximum Valve Leakage at 110 SUS (24 cSt)	10 in ³ /min.@3000 psi
Response Time - Typical	50 ms
Switching Frequency	15,000 max. cycles/hr
Seal kit - Cartridge	Buna: 990-431-007
Seal kit - Cartridge	EPDM: 990-431-014
Seal kit - Cartridge	Viton: 990-431-006

- NOTES:**
- Please verify cartridge clearance requirements when choosing a Sun manifold. Different valve controls and coils require different clearances.
 - An additional 2.00 inches (50,8 mm) beyond the valve extension is needed for coil installation and removal.

CONFIGURATION OPTIONS

Model Code Example: DNDAXNN

CONTROL	(X)	SPOOL CONFIGURATION	(N)	SEAL MATERIAL	(N)	COIL *
X No Manual Override		N Through, Shift to Cross		N Buna-N		No coil
D Twist/Lock (Dual) Manual Override		C Closed, Shift to Through		E EPDM		* Additional coil options are available
L Twist/Lock (Detent) Manual Override		D Closed, Shift to Cross		V Viton		
M Manual Override		E Cross, Shift to Closed				
T Twist (Momentary) Manual Override		H Open, Shift to Cross				
		J Open, Shift to Through				
		L Cross, Shift to P to A, B and T Blocked				
		R Regen, Shift to Cross				
		S Regen, Shift to Through				
		T Tandem, Shift to Through				
		U Through, Shift to Tandem				
		X Cross, Shift to Through				
		Y Motor, Shift to Cross				
		Z Motor, Shift to Through				