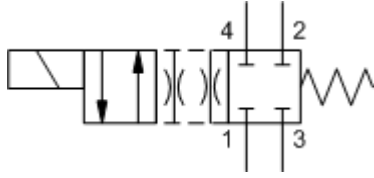
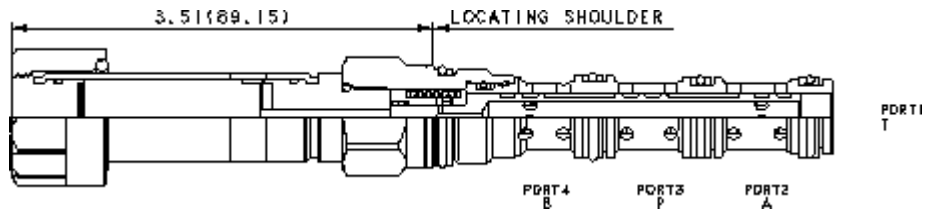


X-Control, N-Spool



X-Control, C-Spool



TECHNICAL DATA NOTE: DATA MAY VARY BY CONFIGURATION. SEE CONFIGURATION SECTION.

Maximum Operating Pressure	350 bar
Manual Override Force Requirement	33 N/100 bar @ Port 1
Manual Override Stroke	2,5 mm
Maximum Valve Leakage at 110 SUS (24 cSt)	160 cc/min.@210 bar
Response Time - Typical	50 ms
Switching Frequency	15,000 max. cycles/hr
Seal kit - Cartridge	Buna: 990-431-007
Seal kit - Cartridge	EPDM: 990-431-014
Seal kit - Cartridge	Viton: 990-431-006
Seal kit - Cartridge	Buna: 990-431-007
Seal kit - Cartridge	EPDM: 990-431-014
Seal kit - Cartridge	Viton: 990-431-006

CONFIGURATION OPTIONS

Model Code Example: DNDAXNN

CONTROL	(X)	SPOOL CONFIGURATION	(N)	SEAL MATERIAL	(N)	BOBINA	(936)
X No Manual Override		N Through, Shift to Cross		N Buna-N		No Coil	
D Twist/Lock (Dual) Manual Override		C Closed, Shift to Through		E EPDM			
L Twist/Lock (Detent) Manual Override		D Closed, Shift to Cross		V Viton			
M activador manual		E Cross, Shift to Closed					
T Twist (Momentary) Manual Override		H Open, Shift to Cross					
		J Open, Shift to Through					
		L Cross, Shift to P to A, B and T Blocked					
		R Regen, Shift to Cross					
		S Regen, Shift to Through					
		T Tandem, Shift to Through					
		U Through, Shift to Tandem					
		X Cross, Shift to Through					
		Y Motor, Shift to Cross					
		Z Motor, Shift to Through					