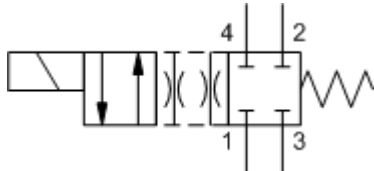
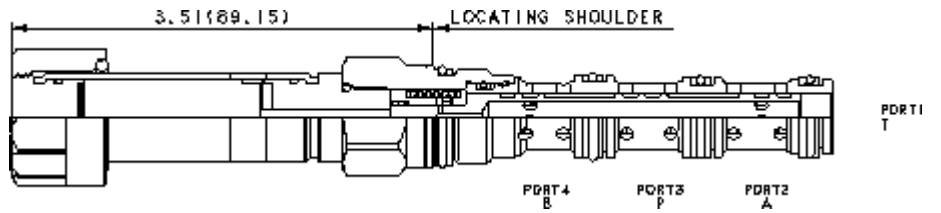


X-Control, N-Spool



X-Control, C-Spool



2 4

**TECHNICAL DATA** NOTE: DATA MAY VARY BY CONFIGURATION. SEE CONFIGURATION SECTION.

	T-31A
	1
	40 L/min.
	350 bar
110 SUS (24 cSt)	160 cc/min.@210 bar
	2,5 mm
	33 N/100 bar @ Port 1
	50 ms
	15,000 max. cycles/hr
	19 mm
	22,2 mm
	41 - 47 Nm
	0.34 kg.
Seal and nut kit - Coil	Viton: 990-770-006
Seal kit - Cartridge	Buna: 990-431-007
Seal kit - Cartridge	EPDM: 990-431-014
Seal kit - Cartridge	Viton: 990-431-006
Seal kit - Cartridge	Buna: 990-431-007
Seal kit - Cartridge	EPDM: 990-431-014
Seal kit - Cartridge	Viton: 990-431-006

- : • Sun
- 2.00 inches (50,8 mm)

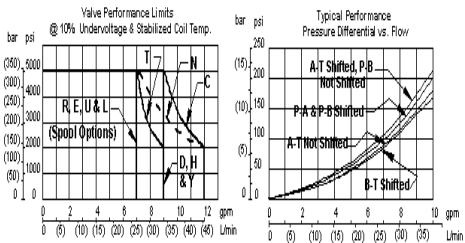
# OPTION SELECTION EXAMPLE: DNDAXNN

	(X)	(N)	(N)
<b>X</b>		<b>N</b>	<b>N</b>
<b>D</b> /		<b>C</b>	<b>E</b> EPDM
<b>L</b>		<b>D</b>	<b>V</b>
<b>M</b>		<b>E</b>	
<b>T</b> ( )		<b>H</b>	
		<b>J</b>	
		<b>L</b> P-A B-T	
		<b>R</b> P-A-B	
		<b>S</b> P-A-B	
		<b>T</b> P-T	
		<b>U</b> P-T	
		<b>X</b>	
		<b>Y</b> A-B-T	
		<b>Z</b> A-B-T	

## TECHNICAL FEATURES

- 5000 psi (350 bar)
- EPDM
- D L
- /
- Sun 1
- IP69K
- Sun /

## PERFORMANCE CURVES



Note: Performance limits are derived with 4-way operation and symmetrical flow. For valve applications where either asymmetrical flow or 3-way operation is present, these performance limits may be reduced.