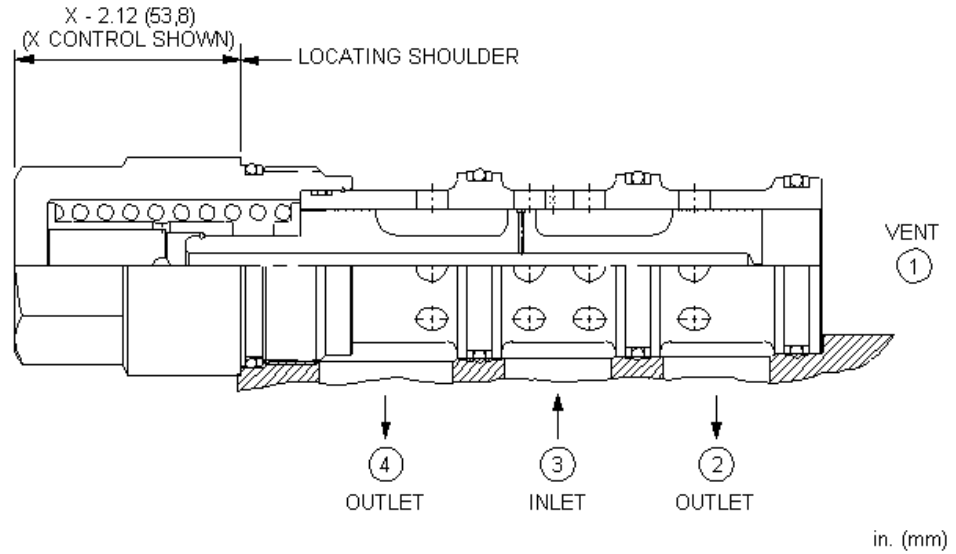


**CONFIGURATION**

X	
C	30 psi (2 bar)
N	



2 1 3 1 3 2 4

**TECHNICAL DATA**

	350 bar
	0,60 L/min.
Seal kit - Cartridge	Buna: 990-034-007
Seal kit - Cartridge	Polyurethane: 990-034-002
Seal kit - Cartridge	Viton: 990-034-006

**CONFIGURATION OPTIONS**

**Model Code Example: DSIXXCN**

(X)

(C)

(N)

**X**

**C** 30 psi (2 bar)

**N**

D 50 psi (3,5 bar)

V

E 75 psi (5 bar)