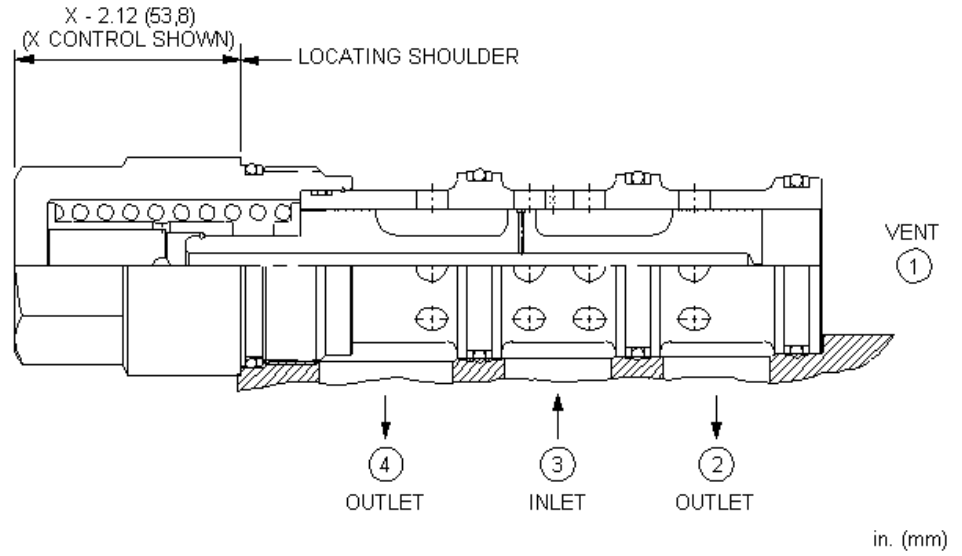


CONFIGURATION

X	
C	30 psi (2 bar)
N	



2 1 3 1 3 2 4

TECHNICAL DATA NOTE: DATA MAY VARY BY CONFIGURATION. SEE CONFIGURATION SECTION.

	T-34A
	4
	480 L/min.
	350 bar
	0,60 L/min.
	41,3 mm
	474 - 508 Nm
	1.50 kg.
Seal kit - Cartridge	Buna: 990-034-007
Seal kit - Cartridge	Polyurethane: 990-034-002
Seal kit - Cartridge	Viton: 990-034-006

OPTION SELECTION EXAMPLE: DSIXXCN

(X)

(C)

(N)

X

C 30 psi (2 bar)
 D 50 psi (3,5 bar)
 E 75 psi (5 bar)

N
 V

TECHNICAL FEATURES

-
- 1
- 1 3
- / /
- 1
-
-
-
- Sun

PERFORMANCE CURVES

