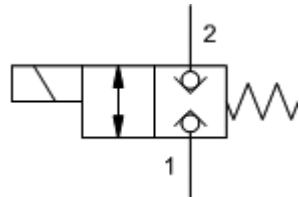
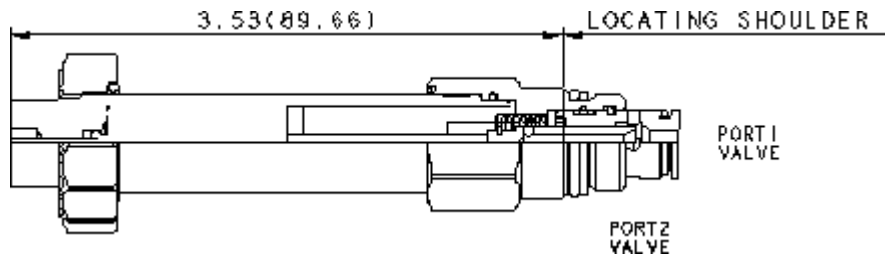


M-Control, C-Poppet



X-Control, C-Poppet



This FLeX Series solenoid-operated 2-way, 2-position cartridge is a direct-acting directional poppet valve. Available in either normally open or normally closed configurations, these valves feature a pressure-balanced design, low leakage, and allow flow or blocking in both directions. This cartridge can be installed directly into a cavity in the end of many of Sun's pilot operated and ventable valves to provide integrated pilot control.

CONFIGURATION

M	Control	Manual Override
H	Poppet Configuration	Normally Open
N	Seal Material	Buna-N
	Coil	

TECHNICAL DATA

Maximum Operating Pressure	5000 psi
Maximum Valve Leakage at 110 SUS (24 cSt)	0.004 in ³ /min.@5000 psi
Viscosity Range	35 - 2000 SUS
Response Time - Typical	50 ms
Switching Frequency	15,000 max. cycles/hr
Seal kit - Cartridge	Buna: 990-608-007
Seal kit - Cartridge	Viton: 990-608-006
U.S. Patent #	10,302,201

- NOTES:**
- For Series 1 cartridges configured with an O control (panel mount handknob), a .75 in. (19 mm) diameter hole is required in the panel.
 - Please verify cartridge clearance requirements when choosing a Sun manifold. Different valve controls and coils require different clearances.
 - An additional 2.00 inches (50,8 mm) beyond the valve extension is needed for coil installation and removal.

CONFIGURATION OPTIONS

Model Code Example: DTAFMHN

CONTROL	(M)	POPPET CONFIGURATION	(H)	SEAL MATERIAL	(N)	COIL *
M Manual Override		H Normally Open		N Buna-N		No coil
D Twist/Lock (Dual) Manual Override		C Normally Closed		E EPDM		* Additional coil options are available
L Twist/Lock (Detent) Manual Override				V Viton		
T Twist (Momentary) Manual Override						
X No Manual Override						