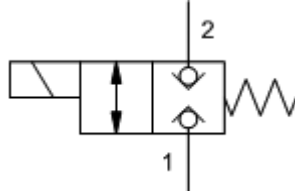
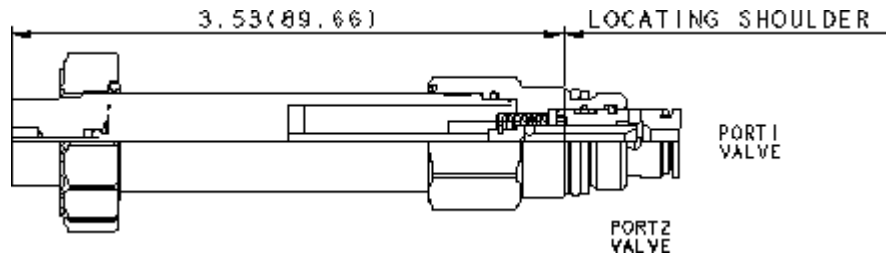


M-Control, C-Poppet



X-Control, C-Poppet



FLeX 2 2

**TECHNICAL DATA**

	350 bar
110 SUS (24 cSt)	0,07 cc/min.@350 bar
	2,8 - 380 cSt
	50 ms
	15,000 max. cycles/hr
Seal kit - Cartridge	Buna: 990-608-007
Seal kit - Cartridge	Viton: 990-608-006
#	10,302,201
Seal kit - Cartridge	Buna: 990-608-007
Seal kit - Cartridge	Viton: 990-608-006

**CONFIGURATION**

- M
- H
- N
- \_\_\_\_\_

- O 1 0.75 in. (19 mm)
- Sun
- 2.00 inches (50,8 mm)

**CONFIGURATION OPTIONS**

Model Code Example: DTAFMHN

(M)	(H)	(N)	(928L)
<b>M</b>	<b>H</b>	<b>N</b>	
D /	C	E EPDM	
L		V	
T ( )			
X			