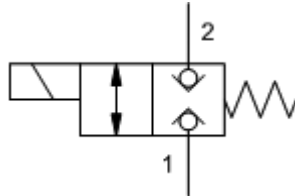
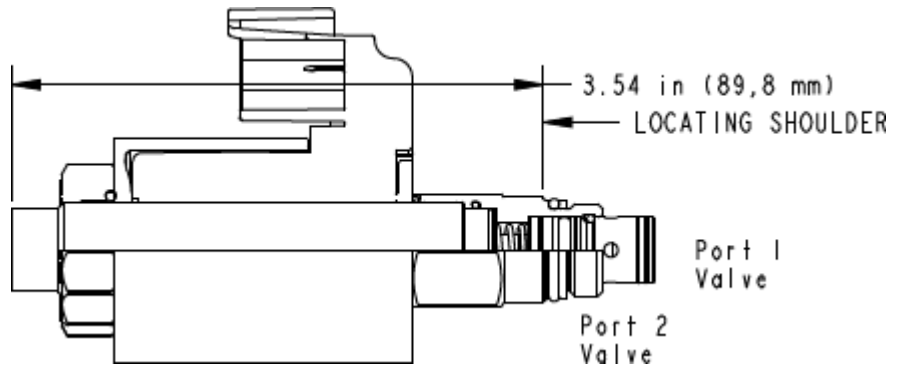


M-Control, C-Poppet



X-Control, C-Poppet



TECHNICAL DATA

Maximum Operating Pressure	350 bar
Maximum Valve Leakage at 110 SUS (24 cSt)	0,07 cc/min.@350 bar
Viscosity Range	2,8 - 380 cSt
Response Time - Typical	50 ms
Switching Frequency	15,000 max. cycles/hr
Seal kit - Cartridge	Buna: 990-608-007
Seal kit - Cartridge	Viton: 990-608-006
U.S. Patent #	10,302,201
Seal kit - Cartridge	Buna: 990-608-007
Seal kit - Cartridge	Viton: 990-608-006

CONFIGURATION

M	Control	activador manual
H	Poppet Configuration	normalmente abierto
N	Seal Material	Buna-N
924	bobina	Deutsch DT04-2P, 24 VDC

CONFIGURATION OPTIONS

Model Code Example: DTAFMHN924

CONTROL	(M)	POPPET CONFIGURATION	(H)	SEAL MATERIAL	(N)	BOBINA	(924)
M activador manual		H normalmente abierto		N Buna-N		No coil	
D Twist/Lock (Dual) Manual Override		C normalmente cerrado		E EPDM			
L Twist/Lock (Detent) Manual Override				V Viton			
T Twist (Momentary) Manual Override							
X No Manual Override							