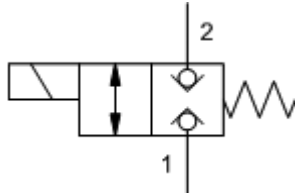
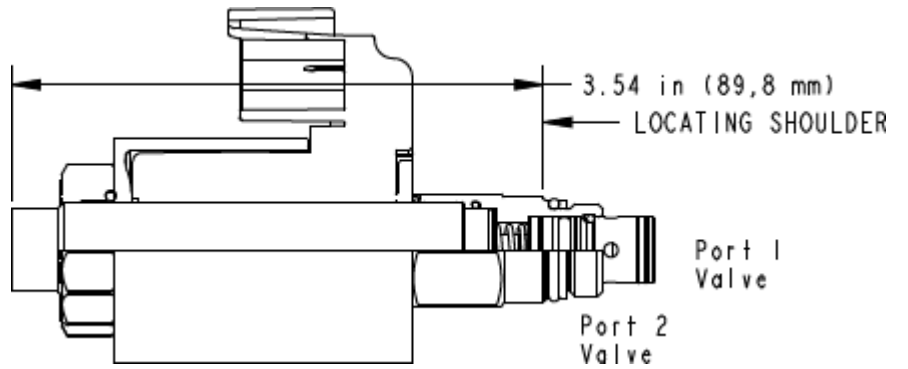


M-Control, C-Poppet



X-Control, C-Poppet



FLeX 2 2

TECHNICAL DATA

CONFIGURATION

M	_____
H	_____
N	_____
924	Deutsch DT04-2P 24 VDC

	350 bar
110 SUS (24 cSt)	0,07 cc/min.@350 bar
	2,8 - 380 cSt
	50 ms
	15,000 max. cycles/hr
Seal kit - Cartridge	Buna: 990-608-007
Seal kit - Cartridge	Viton: 990-608-006
#	10,302,201
Seal kit - Cartridge	Buna: 990-608-007
Seal kit - Cartridge	Viton: 990-608-006

- O 1 0.75 in. (19 mm)
- Sun
- 2.00 inches (50,8 mm)

CONFIGURATION OPTIONS

Model Code Example: DTAFMHN924

(M)	(H)	(N)	(924)
M	H	N	
D /	C	E EPDM	
L		V	
T ()			
X			