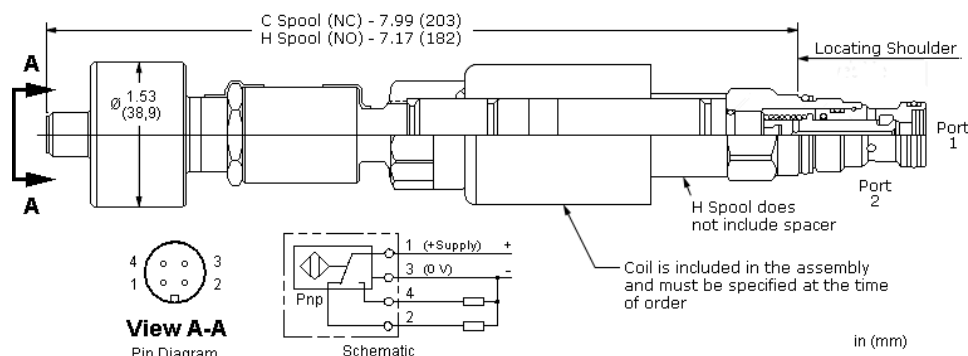


## CONFIGURATION

<b>C</b>	Spool Configuration	Normally Closed
<b>N</b>	Seal Material	Buna-N
<b>211</b>	Coil	DIN 43650-Form A, 115 VAC



This solenoid-operated 2-way, 2-position cartridge is a direct-acting, poppet-style directional valve. Due to the poppet-style construction, this valve has extremely low leakage. Many poppet style directional valves pass a small amount of fluid when the pressure across them changes suddenly. This is due to the compressibility of the fluid. This valve has been designed to prevent this from happening. The position switch provides confirmation that the valve is in the non-energized position. [Click Here for the position sensor pin diagram](https://www.sunhydraulics.com/tech-resources/position-sensor-pin-diagram)

## TECHNICAL DATA

Maximum Operating Pressure	5000 psi
Maximum Valve Leakage at 110 SUS (24 cSt)	10 drops/min. @5000 psi
Response Time - Typical	50 ms
Switching Frequency	15,000 max. cycles/hr
Seal kit - Cartridge	Buna: 990-413-007
Seal kit - Cartridge	EPDM: 990-413-014
Seal kit - Cartridge	Polyurethane: 990-413-002
Seal kit - Cartridge	Viton: 990-413-006

**NOTES:** • An additional 2.00 inches (50,8 mm) beyond the valve extension is needed for coil installation and removal.

## CONFIGURATION OPTIONS

Model Code Example: **DTCAZCN211224**

SPOOL CONFIGURATION

(C)

SEAL MATERIAL

(N)

COIL \*

**C** Normally Closed

**H** Normally Open

**N** Buna-N

**E** EPDM

**V** Viton

No coil

\* Additional coil options are available