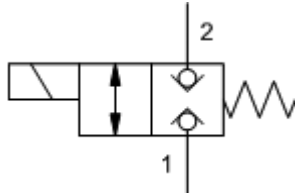
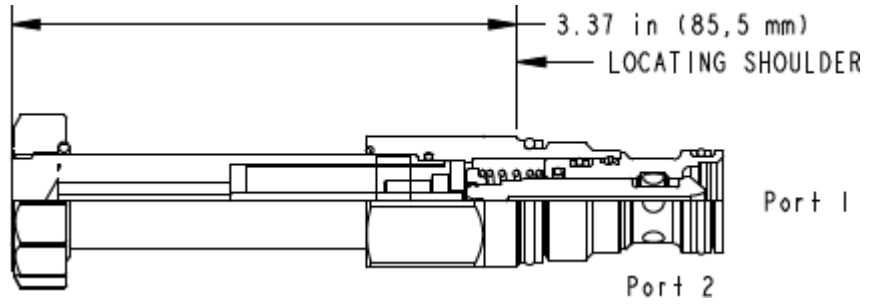


M-Control, C-Poppet



X-Control, C-Poppet



2 2 FLeX

TECHNICAL DATA NOTE: DATA MAY VARY BY CONFIGURATION. SEE CONFIGURATION SECTION.

	350 bar
110 SUS (24 cSt)	0,7 cc/min.@350 bar
	2,5 mm
	33 N/100 bar @ Port 1
	50 ms
	15,000 max. cycles/hr
Seal kit - Cartridge	Buna: 990-413-007
Seal kit - Cartridge	Polyurethane: 990-413-002
Seal kit - Cartridge	Viton: 990-413-006

: • Sun

CONFIGURATION OPTIONS

Model Code Example: DTDFXCN

(X)	(C)	(N)
X	C	N
D /	H	E EPDM
L		V
M		
T ()		