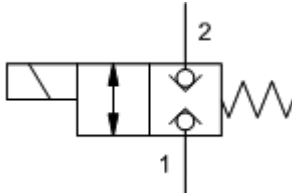
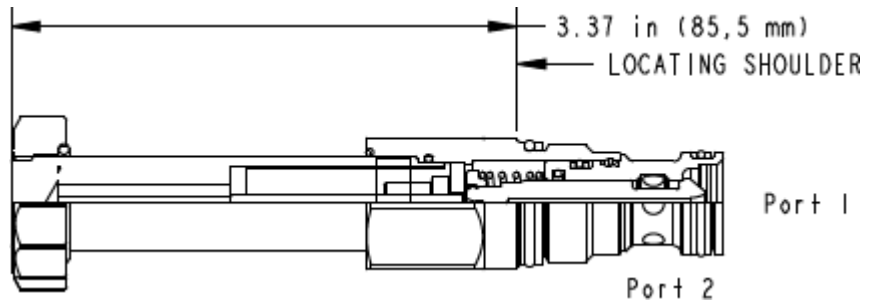


M-Control, C-Poppet



X-Control, C-Poppet



TECHNICAL DATA NOTE: DATA MAY VARY BY CONFIGURATION. SEE CONFIGURATION SECTION.

| | |
|---|---------------------------|
| cavidad | T-13A |
| Series | 1 |
| Capacity | 40 L/min. |
| Maximum Operating Pressure | 350 bar |
| Manual Override Force Requirement | 33 N/100 bar @ Port 1 |
| Manual Override Stroke | 2,5 mm |
| Maximum Valve Leakage at 110 SUS (24 cSt) | 0,7 cc/min.@350 bar |
| Response Time - Typical | 50 ms |
| Switching Frequency | 15,000 max. cycles/hr |
| Solenoid Tube Diameter | 16 mm |
| Valve Hex Size | 22,2 mm |
| Valve Installation Torque | 41 - 47 Nm |
| Model Weight | 0.24 kg. |
| Seal kit - Cartridge | Buna: 990-413-007 |
| Seal kit - Cartridge | Polyurethane: 990-413-002 |
| Seal kit - Cartridge | Viton: 990-413-006 |

OPTION SELECTION EXAMPLE: DTDFXCN

| CONTROL | (X) POPPET CONFIGURATION | (C) SEAL MATERIAL | (N) BOBINA |
|--|------------------------------|-------------------|------------|
| X No Manual Override | C normalmente cerrado | N Buna-N | No coil |
| D Twist/Lock (Dual) Manual Override | H normalmente abierto | E EPDM | |
| L Twist/Lock (Detent) Manual Override | | V Viton | |
| M activador manual | | | |
| T Twist (Momentary) Manual Override | | | |

PERFORMANCE CURVES

