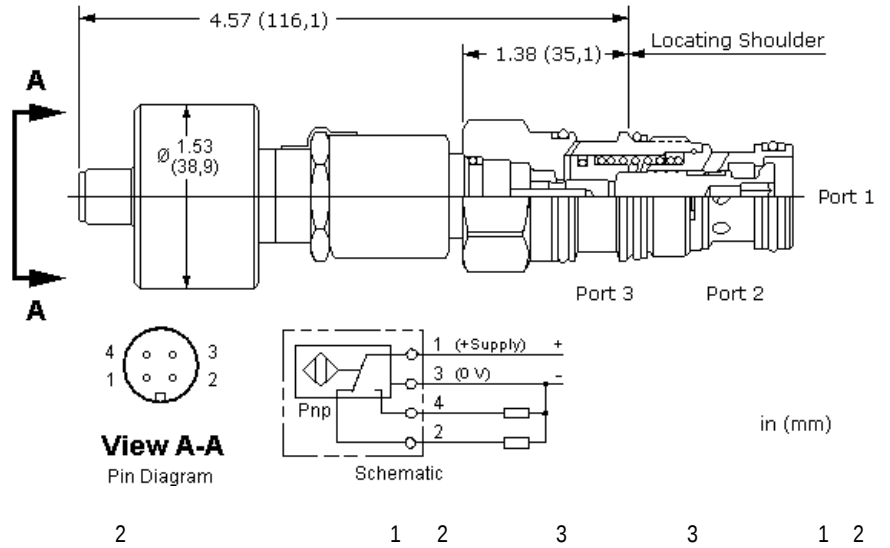


CONFIGURATION

—
—



SWITCH SPECIFICATIONS

	20-30 VDC
	-25 to 80 °C
	≥ 50g, 0-500 impulses/sec
	>50 g, 1ms
	≤ 400 mA, Duty Ratio 100%
	Yes, Load Short Unlimited
	≤ 25 ms
	≤ .002 in.
- 0-80 °C ≤ ±	0,1 mm
	DIN EN 61000-6-1/2/3/4
	M12 X 1 (4) Pin
	IP65
Seal kit - Cartridge	Buna: 990-202-007
Seal kit - Cartridge	EPDM: 990-202-014
Seal kit - Cartridge	Polyurethane: 990-002-002
Seal kit - Cartridge	Viton: 990-202-006

TECHNICAL DATA NOTE: DATA MAY VARY BY CONFIGURATION. SEE CONFIGURATION SECTION.

	T-2A
	2
	80 L/min.
	350 bar
	0,98 cc
110 SUS (24 cSt)	0,07 cc/min.
A3 A1	1.8:1
A3 A2	2.25:1
110 SUS 24 cSt	30 cc/min.@70 bar
	0,9 mm
	28,6 mm
	61 - 68 Nm
	0,41 kg

OPTION SELECTION EXAMPLE: LKFCZN

(D)

(N)

D 50 psi (3,5 bar)

N

E EPDM

V

TECHNICAL FEATURES

-
- EPDM
- 2
-
-
-
- 1 =100% 2 =80% =180%
- 5000 psi (350 bar)
- CE
- Sun /

PERFORMANCE CURVES

